

Easy Ray

ANGUS

18TH ANNUAL BULL SALE

WITH GUEST CONSIGNOR **BMB BREWIN ANGUS**



**70 Black Angus Yearling Bulls
18 Red Angus Yearling Bulls
6 Red Angus Two Year Old Bulls
50 Open Commercial Red Angus Heifers**

**Wednesday March 10, 2021
1 pm @ Perlich Bros. Auction Mart
Lethbridge, AB**

Easy Ran

Angus Ranch



Hello, and a warm welcome to our 18th Annual Bull and Female Sale. We can't all really say good riddance to 2020 because there was the really good, really bad, and the ugly.

Grass and feed was plentiful, and O yes, so was Covid.

We are thankful for all new and repeat customers, you are what makes this business such a joy to be in. We are grateful for each and every one of you.

We are so looking forward to merchandising this great set of yearling bulls, they truly are the best we've ever had. There's a bull here for everyone, from heifer bulls with loads of calving ease and to cow bulls with growth and performance.

This year we will also be offering DLMS & CLIX online bidding, due to restrictions still in place.

Come to the ranch to have a look at the bulls or view them before the sale. We have half of next years' offering on the ground and weather has been great this year. We hope everyone can come to the sale.

Stay safe and God bless
Sincerely, George Hofer

IMPORTANT NOTICE:

This sale will hopefully be held at the Perlich Bros. Auction Market and will be COVID19 compliant, meaning there will be limited seating capacity and social distancing. This also mean, there will be no presale lunch served. In the event of a complete lockdown the sale will move to 100% online, so we encourage interested buyers to view cattle at the respective farms prior to the sale.

EASY RAY ANGUS 18TH ANNUAL BULL SALE

WITH GUEST CONSIGNOR BMB BREWIN ANGUS

WEDNESDAY MARCH 10, 2021 at 1:00PM
PERLICH BROS. AUCTION MART, LETHBRIDGE, AB

SALE DAY PHONES:

GEORGE HOFER, EASY RAY ANGUS	403.892.0291
BRENT BREWIN, BMB BREWIN ANGUS	403.382.9164
JANESSA BREWIN, BMB BREWIN ANGUS	403.330.3417
BOB PERLICH, AUCTIONEER	403.382.7800
DARCY MOOREHEAD, RINGMAN	403.635.0308
JOE PERLICH, FIELD REP	403.635.0310
JUSTIN PERLICH, FIELD REP	403.635.5310

INSURANCE:

STOCKMENS INSURANCE: CHERYL BROWN	403.601.3460
-----------------------------------	--------------

BUYER REPRESENTATIVE FOR



BMB BREWIN ANGUS

MARK HOLOWAYCHUK,
OBI LIVESTOCK 403.896.4990



SCAN ME

Scan the QR code to view videos of the bulls or you can type in the link below as well.

events.playlistviewer.com/events/67_031021_EasyRayBMB_bs/

PERLICH BROS
AUCTION MARKET LTD.

CLIX
AUCTION
CANADIAN LIVE INTERNET EXCHANGE

Internet Bidding Available

D | L | M | S
www.dlms.ca

For more information call DLMS:
Mark Shologan 780.699.5082 or
DLMS Purebred Team 780.991.3025

TERMS & CONDITION

Viewing the Bulls - All of the bulls will be available for viewing at the sale site the morning of the sale or at the farms anytime prior to the sale

Wintering of Bulls - We will winter your yearling bulls FREE OF CHARGE until April 15, 2021. After that feed costs of \$3.00 per head per day will be charged. Any bulls returning to the consignors will be at buyers risk, the consignors will not be responsible for any type of injury while the bulls are in their care. All bulls being wintered must be insured.

Bidding - Each animal will be sold to the highest bidder. The auctioneer will settle any disputes as to bids and their decision will be final. Changes of information contained in this catalogue will be corrected by announcements from the block at sale time & shall take precedence over printed material.

Terms - The terms of the sale are cash or cheque. The right of property shall not pass until after settlement is made. All settlements will be made with the clerks of the sale immediately following the conclusion of the sale. Each animal becomes the risk of the purchaser as soon as it's sold.

Delivery - We will deliver your bulls free of charge within 200 km, extra mileage will be at cost.

Registered Lots - A certificate of registry will be mailed to the buyer for each animal after settlement is made. All bulls sell under the terms and condition of the Canadian Angus Association's Breeders Guarantee.

Liabilities - Perlich Bros. Auction Mart is acting as an agent only in this sale and is not liable in any matter whatsoever for any representations made by the seller. The purchaser must look to the seller for fulfillment of all guarantees and representations made hereunder.

Inspection & Semen Testing - All bulls will be semen tested and vet inspected prior to the sale. Sale weights & scrotal measurements will be provided sale day.

REFERENCE SIRES

A

REID ANGUS MATRIX 103F

2039036 • REID 103F • February 10, 2018
 RITO 707 OF IDEAL 3407 7075
 SIRE: S A V RESOURCE 1441
 S A V BLACKCAP MAY 4136
 REID ANGUS ADVANTAGE 11U
 DAM: REID ANGUS STKMN HERDSMAN 32X
 REID ANGUS STKMN HERDSMAN 41P

BW: 82	BW	WW	YW	MILK	DMI	CE	MARB	REA
WW: 757	1.4	60	106	18	1.23	5.0	0.18	0.93
YW: 1268								

We bought this RESOURCE son for his calving ease. His male calves have a 70 pound birth weight average. His progeny will improve growth and carcass.

E

U2 PRIME CUT 472D

1924924 • DUA 472D • February 3, 2016
 VERMILION SIRLOIN
 SIRE: HA PRIME CUT 4493
 HA MISS BLACKCAP 9127
 YOUNG DALE XCLUSIVE 25X
 DAM: U2 ERELITE 109Z
 U-2 ERELITE 1X

BW: 80	BW	WW	YW	MILK	DMI	CE	MARB	REA
WW: 945	0.7	75	130	35	1.16	9.0	0.57	0.59
YW: 1632								

His GrandDam is an Elite cow. Dam sold for \$140,000 at the U2 dispersal sale. He has a 80lbs male calf average at birth. He's also in the top 1% for WW, YW, and Milk.

B

ALLENCROFT TIMELESS 03 348E

1960283 • IGV 348E • January 26, 2017
 LEACHMAN RIGHT TIME 338-5605
 SIRE: WMR TIMELESS 458
 WMR BLACKCAP 521
 PRAIRIELANE 8018 1108
 DAM: ALLENCROFT ROSEBUD 01 327A
 PRAIRIELANE 9011 ROSEBUD 1029

BW: 88	BW	WW	YW	MILK	DMI	CE	MARB	REA
WW: 862	2.5	76	117	19	1.05	8.0	0.13	0.54
YW: 1315								

Super calving ease and he's out of an Elite Dam. Top of the breed carcass quality.

F

REMITALL F CAVALIER 37F

2034273 • GR 37F • January 13, 2018
 S A V ANGUS VALLEY 1867
 SIRE: REMITALL F CAVALIER 67C
 REMITALL F KARAMA 8A
 REMITALL F BRIGADIER 86B
 DAM: REMITALL F KARAMA 174D
 REMITALL F KARAMA 64A

BW: 80	BW	WW	YW	MILK	DMI	CE	MARB	REA
WW: 786	0.4	60	115	20	0.74	7.0	0.32	0.23
YW: 1447								

A sure footed bull with such nicely stacked EPDs caught our eyes at the Remitall sale. We bought him to improve our calving ease and he has done very well for us with a male calf BW average of 72 pounds.

C

BORDER BUTTE PRIME VISION 451D

1950231 • BRDR 451D • February 8, 2016
 CONNEALY REFLECTION
 SIRE: JINDRA DOUBLE VISION
 HOFF RACHEL 8312 405
 S A F 598 BANDO 5175
 DAM: SAV PRIMROSE 7861
 S A V PRIMROSE 8244

BW: 98	BW	WW	YW	MILK	DMI	CE	MARB	REA
WW: 786	0.8	56	107	32	0.63	9.0	0.70	0.19
YW: 1429								

He was a high seller at the Border Butte Angus 2017 sale. He is out of a Schaff Angus cow. Progeny will give you high marks for frame, size, calving ease, growth and performance.

G

BORDER BUTTE EARNAN 29C

1855039 • BRDR 29C • January 23, 2015
 CONNEALY CONSENSUS
 SIRE: CONNEALY EARNAN 076E
 BRAZILA OF CONANGA 3991 839A
 MERIT 6080
 DAM: BORDER BUTTE DELLA 29W
 CUDLOBE DELIA 102R

BW: 91	BW	WW	YW	MILK	DMI	CE	MARB	REA
WW: 868	1.8	60	108	22	1.27	1.0	0.37	0.26
YW: 1345								

D

LWNBURG UNANIMOUS 149D

19001157 • TED 149D • February 16, 2016
 VISIONTOPLINE ROYAL STOCKMAN
 SIRE: VISION UNANIMOUS 1418
 VISION EDELLA 665
 LCC NEW STANDARD
 DAM: TED NEW STANDARD 29Z
 TED NET WORTH 14X

BW: 87	BW	WW	YW	MILK	DMI	CE	MARB	REA
WW: 880	1.1	66	121	32	1.59	7.0	0.57	0.49
YW: 1431								

The bulls we are selling from this sire will improve you calving ease, growth and performance. He is in the top 1% for Milk and has high marks for carcass.

H

BORDER BUTTE BLASTER 323E

1989248 • BRDR 323E • January 10, 2017
 MOGCK BULLSEYE
 SIRE: BRUNS BLASTER
 BALDRIDGE BLACKBIRD 11 BAF
 MUSGRAVE BLACK LOCH
 DAM: BORDER BUTTE EVE 217C
 BORDER BUTTE EVA 10A

BW: 74	BW	WW	YW	MILK	DMI	CE	MARB	REA
WW: 797	4.6	87	150	39	2.02	2.0	0.43	0.45
YW: 1463								

Blaster was the 2nd highest selling bull at the 2016 Border Butte Angus sale and we aquired him for quite a bit of coin. Progeny from him will improve, Milk and Carcass. His dam is an Elite cow.

REFERENCE SIRES

I

WESTERN ACCLAIM 822

2066110 • MWU 22F • January 16, 2018

JINDRA 3RD DIMENSION

SIRE: JINDRA ACCLAIM

JINDRA BLACKBIRD LASSY 1111

BON VIEW NEW DESIGN 878

DAM: WESTERN BLACKLASS 37P

WESTERN BLACKLASS 30M

BW: 70	BW	WW	YW	MILK	DMI	CE	MARB	REA
WW: 775	-0.9	56	107	27	0.55	13.0	0.60	0.27
YW: n/a								

A sire in the top of the breed for growth and marbling.

J

GURNEY ABSOLUTE 4D

1899449 • WCG 4D • January 17, 2016

S A V FINAL ANSWER 0035

SIRE: K C F BENNETT ABSOLUTE

THOMAS MISS LUCY 5152

BROWN CRK HOOVER DAM 41Z

DAM: GURNEY NEONIA 83B

GURNEY NEONIA 6X

BW: 80	BW	WW	YW	MILK	DMI	CE	MARB	REA
WW: 790	-0.1	58	105	28	0.67	10.0	0.52	0.50
YW: n/a								

He's a chunk of a bull! He is in the top 20% and better for any and all qualities any good cowboy is looking for these days. His +10.0 calving ease is a bonus.

K

WESTERN UNANIMOUS 718

1986832 • MWU 18E • January 16, 2017

VISIONTOPLINE ROYAL STOCKMAN

SIRE: VISION UNANIMOUS 1418

VISION EDELLA 665

CONNEALY IMPRESSION

DAM: WESTERN MISSIE 201

WESTERN GRID MISS 821

BW: 82	BW	WW	YW	MILK	DMI	CE	MARB	REA
WW: 798	5.0	71	122	16	1.21	-8.0	0.34	0.56
YW: n/a								

Powerful growth qualities are what made this bull stand out to us! High carcass values. His male calf average for weaning weights is 700 pounds.

EASY RAY HEALTH PROGRAM

All of our bulls are on the Phizer Gold Herd Health Program. The bulls have had all the shots twice, once at branding and then again at weaning. We also use Ivomec and Saber for Lice.

EASY RAY FEEDING PROGRAM

Our bulls have been creep fed for 3 weeks before weaning. After weaning, they are on a high forage ration, dry hay, corn and barley silage, earlage and very little rolled barley. We refuse to feed for the rail, rather we strive to develop them for fertility.

YEARLING BLACK ANGUS BULLS

LOT
1

EASY RAY MATRIX 257G

2165099 • EA 257G • December 22, 2019

SAV RESOURCE 1441

SIRE: REID ANGUS MATRIX 103F

REID ANGUS STKMN HERDSMAN 32X

ALLEN CROFT II IMPACT 07 3B

DAM: EASY RAY ELBA 92F

EASY RAY ELBA 67X

BW: 71	BW	WW	YW	MILK	TM	CE	MARB	REA
WW: 757	2.0	63	109	16	23	4.0	0.45	0.65
YW: 1326								

•Heifer Bull

A great looking bull out of our Resource sire, he'll do well in the heifer pen with a low BW and good carcass qualities.



LOT
2

EASY RAY BLASTER 258G

2165101 • EA 258G • December 23, 2019

BRUNS BLASTER

SIRE: BORDER BUTTE BLASTER 323E

BORDER BUTTE EVE 217C

U2 PRIME CUT 472D

DAM: EASY RAY ZARA 84F

EASY RAY ZARA 151D

BW: 70	BW	WW	YW	MILK	DMI	CE	MARB	REA
WW: 657	0.4	67	98	32	0.46	9.0	0.42	0.32
YW: 1193								

•Heifer Bull

A calving ease specialist with a +9 CE. He went from 70lbs to just shy of 1200 in 12 months.

LOT
4

EASY RAY CAVALIER 269G

2165103 • EA 269G • December 28, 2019

REMITALL F CAVALIER 67C

SIRE: REMITALL F CAVALIER 37F

REMITALL F KARAMA 174D

ALLEN CROFT II IMPACT 07 3B

DAM: EASY RAY KATE 93F

EASY RAY KATE 64Y

BW: 67	BW	WW	YW	MILK	TM	CE	MARB	REA
WW: 684	0.3	51	92	64	0.14	5.0	0.11	0.70
YW: 1269								

•Heifer Bull

He goes all the way back to SAV Angus Valley with great genetics and a high ribeye score.



LOT
3

EASY RAY BLASTER 259G

2165075 • EA 259G • December 24, 2019

BRUNS BLASTER

SIRE: BORDER BUTTE BLASTER 323E

BORDER BUTTE EVE 217C

LWNBURG UNANIMOUS 149D

DAM: EASY RAY LASS 146F

EASY RAY LASS 99Y

BW: 88	BW	WW	YW	MILK	DMI	CE	MARB	REA
WW: 739	5.0	67	117	29	1.07	-5.0	0.28	0.39
YW: 1230								

•Cow Bull

A solid looking Blaster son with awesome stacked EPDs, including a +29 MILK.



YEARLING BLACK ANGUS BULLS

**LOT
5**

EASY RAY VISION 3H

2164890 • EA 3H • January 1, 2020

JINDRA DOUBLE VISION

SIRE: BORDER BUTTE PRIME VISION 451D

SAV PRIMROSE 7861

EASY RAY IN FOCUS 3U

DAM: EASY RAY BEULAH 98Z

EASY RAY BEULAH 24U

BW: 89	BW	WW	YW	MILK	DMI	CE	MARB	REA
WW: 716	2.3	52	94	31	0.48	4.0	0.55	0.36
YW: 1158								

• **Bigger Heifers**

Moderate Calving Ease, high marbling and milk EPDs. A great Dam that goes back to In Focus, Prime Vision will add frame to any herd.



**LOT
6**

EASY RAY UNANIMOUS 4H

21649913 • EA 4H • January 1, 2020

VISION UNANIMOUS 1418

SIRE: WESTERN UNANIMOUS 718

WESTERN MISSIE 201

JF FINALIZE B28

DAM: EASY RAY ELLA 172D

EASY RAY ELLA 84C

BW: 88	BW	WW	YW	MILK	DMI	CE	MARB	REA
WW: 665	3.5	56	99	21	0.47	-5.0	0.50	0.32
YW: 1200								

• **Cow Bull**

This bull will leave you with a lot of good females, his sire's male calf averages are 699lbs at weaning.



**LOT
7**

EASY RAY EARNAN 7H

2178450 • EA 7H • January 1, 2020

CONNELLY EARNAN 076E

SIRE: BORDER BUTTE EARNAN 29C

BORDER BUTTE DELLA 29W

FF PLATINUM Z126

DAM: EASY RAY ZARA 95B

EASY RAY ZARA 20Y

BW: 66	BW	WW	YW	MILK	DMI	CE	MARB	REA
WW: 690	0.1	53	95	14	0.33	8.0	0.32	-0.01
YW: 1174								

• **Heifer Bull**

A sturdy heifer bull out of Earnan 29C born weighing 66lbs, brings with him a +8 calving ease. His Dam, 95B, is one of our best cows.

**LOT
9**

EASY RAY PRIME CUT 15H

2164914 • EA 15H • January 3, 2020

HA PRIME CUT 4493

SIRE: U2 PRIME CUT 472D

U2 ERELITE 109Z

FF PLATINUM Z126

DAM: EASY RAY PAULA 107B

EASY RAY PAULA 41Y

BW: 72	BW	WW	YW	MILK	DMI	CE	MARB	REA
WW: 664	0	58	106	35	1.17	10	0.27	0.27
YW: 1088								

• **Heifer Bull**

He'll give your heifers an easy start with less worry at calving. Great grand dam is an Elite cow out of U2 Prime Cut.



**LOT
8**

EASY RAY UNANIMOUS 12H

2164939 • EA 12H • January 2, 2020

VISION UNANIMOUS 1418

SIRE: LWNBRG UNANIMOUS 149D

TED NEW STANDARD 29Z

BENCHMARK CATALYST 135*11

DAM: EASY RAY ZARA 42C

EASY RAY ZARA 55Y

BW: 84	BW	WW	YW	MILK	DMI	CE	MARB	REA
WW: 709	2.1	57	101	28	0.56	7.0	0.77	0.09
YW: 1283								

• **Heifer Bull**

Explosive growth and very high marbling, he will add these and more great qualities to your calves

YEARLING BLACK ANGUS BULLS

LOT
10

EASY RAY BLASTER 16H

2176797 • EA 16H • January 3, 2020

BRUNS BLASTER

SIRE: BORDER BUTTE BLASTER 323E
BORDER BUTTE EVE 217C
ALLEN CROFT II IMPACT 07 3B

DAM: EASY RAY LASS 124F
EASY RAY LASS 59W

BW: 79	BW	WW	YW	MILK	DMI	CE	MARB	REA
WW: 677	4.0	62	102	38	0.96	-3.0	0.88	0.05
YW: 1170								

•Cow Bull

A high marbling bull that will improve the MILK in your cow herd.

LOT
11

EASY RAY ABSOLUTE 18H

2164402 • EA 18H • January 3, 2020

K C F BENNETT ABSOLUTE

SIRE: GURNEY ABSOLUTE 4D
GURNEY NEONIA 83B
HF TIGER 161A

DAM: EASY RAY ERROLINE 108D
EASY RAY ERROLINE 85Z

BW: 73	BW	WW	YW	MILK	DMI	CE	MARB	REA
WW: 638	-0.7	54	95	20	0.66	10.0	0.47	0.39
YW: 1253								

•Heifer Bull

This bull weighed 73lbs at birth and brings with him a +10 CE, he's out of our Absolute Sire that has done very well for us.

LOT
12

EASY RAY ABSOLUTE 21H

2164692 • EA 21H • January 3, 2020

K C F BENNETT ABSOLUTE

SIRE: GURNEY ABSOLUTE 4D
GURNEY NEONIA 83B
BORDER BUTTE FINAL ANSWER 111A

DAM: EASY RAY ELBA 16D
EASY RAY ELBA 55W

BW: 62	BW	WW	YW	MILK	DMI	CE	MARB	REA
WW: 687	-2.1	55	95	27	0.82	13.0	0.47	0.41
YW: 1237								

•Heifer Bull

He's got super calving ease! He was born weighing only 62lbs but grew to 687. He'll be good for heifers for 2-3 years.

LOT
13

EASY RAY MATRIX 22H

2164690 • EA 22H • January 3, 2020

S A V RESOURCE 1441

SIRE: REID ANGUS MATRIX 103F
REID ANGUS STKMN HERDSMAN 32X
ALLEN CROFT IMPACT 03 321C

DAM: EASY RAY ERICA 162F
EASY RAY ERICA 61D

BW: 88	BW	WW	YW	MILK	DMI	CE	MARB	REA
WW: 791	5.0	68	116	22	-	-7.0	-	-
YW: 1364								

•Cow Bull

This bull's genetics take him back to the RESOURCE sire with growth and form. He's got high WW & YW EPDs, weaned at just shy of 800lbs, and weighed 1364 at 12 months.

LOT
14

EASY RAY ABSOLUTE 24H

2164902 • EA 24H • January 4, 2020

K C F BENNETT ABSOLUTE

SIRE: GURNEY ABSOLUTE 4D
GURNEY NEONIA 83B
WESTERN DESIGN 517

DAM: EASY RAY LASS 27X
EASY RAY LASS 60N

BW: 78	BW	WW	YW	MILK	DMI	CE	MARB	REA
WW: 691	1.3	46	79	37	0.35	3.0	0.49	0.35
YW: 1129								

•Heifer Bull

A high marbling bull with a +37 Milk EPD, he's the stocky type that will add strength and frame to your herd.



LOT
15

EASY RAY ABSOLUTE 25H

2164902 • EA 25H • January 1, 2020

K C F BENNETT ABSOLUTE

SIRE: GURNEY ABSOLUTE 4D
GURNEY NEONIA 83B
ALLEN CROFT UPWARD 07 215X

DAM: EASY RAY ELBA 11Z
EASY RAY ELBA 55W

BW: 85	BW	WW	YW	MILK	DMI	CE	MARB	REA
WW: 762	4.0	83	148	29	1.53	-3.0	0.34	0.28
YW: 1420								

•Herd Bull

He's a great looking bull out of one of our best cows, his dam is the type that produces great calves again and again. He's a meat machine from 85-1470 lbs.

YEARLING BLACK ANGUS BULLS

LOT
16

EASY RAY 26H
UNREGISTERED • EA 26H • January 4, 2020

REMITALL F BRIGADIER 53D
DAM: EASY RAY BRIGADIER 159F
EASY RAY PAULA 23Z

BW: 83	BW	WW	YW	MILK	DMI	CE	MARB	REA
WW: 760	-	-	-	-	-	-	-	-
YW: 1310								

Performance bull for bigger heifers and cows. Selling unregistered.



LOT
17

EASY RAY ABSOLUTE 28H
2161934 • EA 28H • January 4, 2020

K C F BENNETT ABSOLUTE
SIRE: GURNEY ABSOLUTE 4D
GURNEY NEONIA 83B
WILLABAR FUTURE DIRECTION 71R
DAM: EASY RAY LUCY 27W
BAR DOUBLE M LUCY 102G

BW: 80	BW	WW	YW	MILK	DMI	CE	MARB	REA
WW: 710	0.5	52	93	27	0.43	7.0	0.49	0.30
YW: 1261								

•Heifer Bull

His dam is an Elite Dam with longevity at its finest, she's had her 10th calf this year! A high marbling bull.



LOT
18

EASY RAY TIMELESS 32H
2164949 • EA 32H • January 4, 2020

WMR TIMELESS58
SIRE: ALLENCROFT TIMELES 03 348E
ALLENCROFT ROSEBUD 01 327A
TED FINAL ANSWER 2W
DAM: EASY RAY ERICA 34B
EASY RAY ERICA 17U

BW: 78	BW	WW	YW	MILK	DMI	CE	MARB	REA
WW: 703	1.9	62	96	17	0.35	7.0	0.41	0.43
YW: 1251								

•Heifer Bull

An awesome looking bull that can be moved to the cow pen when he gets bigger. Timeless is a train of a bull.



LOT
19

EASY RAY ABSOLUTE 35H
2164943 • EA 35H • January 5, 2020

K C F BENNETT ABSOLUTE
SIRE: GURNEY ABSOLUTE 4D
GURNEY NEONIA 83B
BENCHMARK PROPHET 18'13
DAM: EASY RAY LASS 15D
EASY RAY LASS 99Y

BW: 82	BW	WW	YW	MILK	DMI	CE	MARB	REA
WW: 743	1.3	60	108	28	0.91	7.0	0.57	0.34
YW: 1343								

•Heifer/Herd Bull

Calving ease is bred into this dam's family. Tremendous growth! He's easy to find.



YEARLING BLACK ANGUS BULLS



LOT
20

EASY RAY MATRIX 36H

2164511 • EA 36H • January 5, 2020

S A V RESOURCE 1441

SIRE: REID ANGUS MATRIX 103F

REID ANGUS STKMN HERDSMAN 32X

U2 PRIME CUT 472D

DAM: EASY RAY ELBA 198E

EASY RAY ELBA 25D

BW: 95	BW	WW	YW	MILK	DMI	CE	MARB	REA
WW: 898	4.4	83	143	25	-	-1.0	-	-
YW: 1389								

•**Cow Bull**

He's a first calf out of ELBA 198E. The performance genetics this bull shows are hard to find; it doesn't get much better than +83 WW and +143 YW.



LOT
21

EASY RAY BLASTER 39H

2164730 • EA 39H • January 5, 2020

BRUNS BLASTER

SIRE: BORDER BUTTE BLASTER 323E

BORDER BUTTE EVE 217C

HF TIGER 161A

DAM: EASY RAY BARDELLA 66E

EASY RAY BARDELLA 45Y

BW: 87	BW	WW	YW	MILK	DMI	CE	MARB	REA
WW: 803	3.8	83	141	29	1.48	1.0	0.42	0.37
YW: 1330								

•**Herd Bull**

He's loaded with everything you need for a great herd bull, just look at his EPDs! High scores all around, even milk. You're gonna like him.



LOT
22

EASY RAY UNANIMOUS 51H

2165061 • EA 51H • January 6, 2019

VISION UNANIMOUS 1418

SIRE: WESTERN UNANIMOUS 718

WESTERN MISSIE 201

REMITALL F BRIGADIER 53D

DAM: EASY RAY LASS 143F

EASY RAY LASS 126B

BW: 85	BW	WW	YW	MILK	DMI	CE	MARB	REA
WW: 806	5.7	76	125	17	1.16	-9.0	0.28	0.40
YW: 1352								

•**Cow Bull**

He's a performance and growth bull with a high YW EPD. His Grand Dam is an Elite cow and he was LASS 143F's first calf.



LOT
23

EASY RAY VISION 54H

2165083 • EA 54H • January 7, 2020

JINDRA DOUBLE VISION

SIRE: BORDER BUTTE PRIME VISION 451D

SAV PRIMROSE 7861

ALLENOCROFT II IMPACT 07 3B

DAM: EASY RAY LASS 111D

EASY RAY LASS 65A

BW: 78	BW	WW	YW	MILK	DMI	CE	MARB	REA
WW: 701	2.7	67	114	21	0.99	2.0	0.83	0.26
YW: 1253								

•**Cow Bull**

A bull that can also be used on those bigger framed heifers. All of Prime Visions sons averaged 697 at weaning. Grand Dam is an Elite.

YEARLING BLACK ANGUS BULLS

LOT
24

EASY RAY PRIME CUT 56H

2164900 • EA 56H • January 7, 2020

HA PRIME CUT 4493

SIRE: U2 PRIME CUT 472D

U2 ERELITE 109Z

FF PLATINUM Z126

DAM: EASY RAY LASS 131B

EASY RAY LASS 4Y

BW: 79	BW	WW	YW	MILK	DMI	CE	MARB	REA
WW: 749	2.5	66	126	35	1.51	4.0	0.33	0.62
YW: 1343								

•Cow Bull

Moderate calving ease. Out of our Prime Cut sire whose Dam fetched \$140,000 at U2 dispersal. Dam is an Elite cow at Easy Ray. A herd bull!



LOT
25

EASY RAY VISION 57H

2165063 • EA 57H • January 7, 2020

JINDRA DOUBLE VISION

SIRE: BORDER BUTTE PRIME VISION 451D

SAV PRIMROSE 7861

BENCHMARK PROPHET 18'13

DAM: EASY RAY PAULA 53D

EASY RAY PAULA 23Z

BW: 76	BW	WW	YW	MILK	DMI	CE	MARB	REA
WW: 694	0.7	51	99	40	0.61	10.0	0.58	0.26
YW: 1194								

•Heifer Bull

He's a calving ease specialist! This bulls can also be added to the cows when he gets too big. There's a lot of things right with this bull.



LOT
26

EASY RAY MATRIX 58H

2164682 • EA 58H • January 7, 2020

S A V RESOURCE 1441

SIRE: REID ANGUS MATRIX 103F

REID ANGUS STKMN HERDSMAN 32X

REMITALL F BRIGADIER 53D

DAM: EASY RAY ZARA 101F

EASY RAY ZARA 79B

BW: 59	BW	WW	YW	MILK	DMI	CE	MARB	REA
WW: 673	-0.2	59	100	20	-	8.0	-	-
YW: 1132								

•Heifer Bull

A bull for those of us that want that first calf to come easy and grow quickly. He grew from 59-673 in 205 days. Deep RESOURCE genetics.

LOT
27

EASY RAY ABSOLUTE 73H

2164945 • EA 73H • January 9, 2020

K C F BENNETT ABSOLUTE

SIRE: GURNEY ABSOLUTE 4D

GURNEY NEONIA 83B

ALLEN CROFT II IMPACT 07 3B

DAM: EASY RAY ZARA 48D

EASY RAY ZARA 75A

BW: 67	BW	WW	YW	MILK	DMI	CE	MARB	REA
WW: 665	-1.8	37	71	19	-0.21	12.0	0.62	0.19
YW: 1059								

•Heifer Bull

Another ABSOLUTE son with super calving ease! A "no worry" and "sleep all night" type of bull. Heifers will have them standing on all fours, Guaranteed.

LOT
28

EASY RAY MATRIX 82H

2164927 • EA 82H • January 10, 2020

S A V RESOURCE 1441

SIRE: REID ANGUS MATRIX 103F

REID ANGUS STKMN HERDSMAN 32X

ALLEN CROFT II IMPACT 07 3B

DAM: EASY RAY LUCY 141F

EASY RAY LUCY 91B

BW: 72	BW	WW	YW	MILK	DMI	CE	MARB	REA
WW: 686	1.7	57	101	10	0.52	0	0.71	0.64
YW: n/a								

•Bigger Heifer Bull

He was born at 72 pounds and I wouldn't hesitate to use him on slightly bigger heifers. We bought Matrix for our heifers and he clicked for us.

"We sell the types of bulls we like to own"

YEARLING BLACK ANGUS BULLS

LOT
29

EASY RAY PRIME CUT 85H

2164922 • EA 85H • January 11, 2020

HA PRIME CUT 4493

SIRE: U2 PRIME CUT 472D

U2 ERELITE 109Z

BENCHMARK PREMIUM BEEF 9139

DAM: EASY RAY LUCY 21Z

EASY RAY LUCY 58X

BW: 77	BW	WW	YW	MILK	DMI	CE	MARB	REA
WW: 655	-1.1	48	92	31	0.61	8.0	0.70	0.18
YW: 1215								

•Heifer Bull

A bull with high Marbling scores and a Dam that's the type of cow you want thousands of. He'll leave you with some fine females.



LOT
30

EASY RAY ABSOLUTE 91H

2164532 • EA 91H • January 12, 2020

K C F BENNETT ABSOLUTE

SIRE: GURNEY ABSOLUTE 4D

GURNEY NEONIA 83B

HF TIGER 161A

DAM: EASY RAY LUCY 24D

EASY RAY LUCY 33U

BW: 65	BW	WW	YW	MILK	DMI	CE	MARB	REA
WW: 702	-0.8	57	95	26	0.62	11.0	0.46	0.40
YW: 1170								

•Heifer Bull

91H is the type of bull to use to get those first calves out safe and sound. His weights are just spectacular 65-702-1170!

LOT
33

EASY RAY BLASTER 101H

2164923 • EA 101H • January 12, 2020

BRUNS BLASTER

SIRE: BORDER BUTTE BLASTER 323E

BORDER BUTTE EVE 217C

ALLEN CROFT IMPACT 03 321C

DAM: EASY RAY ELBA 151E

EASY RAY ELBA 2A

BW: 77	BW	WW	YW	MILK	DMI	CE	MARB	REA
WW: 713	2.5	58	100	32	0.69	1.0	0.37	0.50
YW: 1187								

•Cow Bull

He can also be used on bigger framed heifers. He will add lots of Milk and Ribeye to your herd. BLASTER has done so well for us here at Easy Ray.

LOT
31

EASY RAY ABSOLUTE 97H

2164912 • EA 97H • January 12, 2020

K C F BENNETT ABSOLUTE

SIRE: GURNEY ABSOLUTE 4D

GURNEY NEONIA 83B

WESTERN DESIGN 517

DAM: EASY RAY LUCY 60X

EASY RAY LUCY 8R

BW: 85	BW	WW	YW	MILK	DMI	CE	MARB	REA
WW: 682	1.3	32	65	29	-0.18	6.0	0.28	0.28
YW: 1154								

•Heifer Bull

Another great looking ABSOLUTE son, very moderate EPDs and a high MILK. Dam is one of our Elite cows that just had her 10th calf.



LOT
32

EASY RAY TIMELESS 98H

2164908 • EA 98H • January 12, 2020

WMR TIMELESS58

SIRE: ALLEN CROFT TIMELES 03 348E

ALLEN CROFT ROSEBUD 01 327A

ALLEN CROFT UPWARD 07 215X

DAM: EASY RAY ZARA 108C

EASY RAY ZARA 20Y

BW: 81	BW	WW	YW	MILK	DMI	CE	MARB	REA
WW: 702	2.4	68	118	12	1.24	6.0	0.36	0.61
YW: 1194								

•Heifer Bull

He's got calving ease, growth and performance. Grand Dam is an Elite cow with 5 grand calves.



YEARLING BLACK ANGUS BULLS

LOT
34

EASY RAY ABSOLUTE 104H

2164942 • EA 104H • January 12, 2020

K C F BENNETT ABSOLUTE

SIRE: GURNEY ABSOLUTE 4D

GURNEY NEONIA 83B

BENCHMARK PREMIUM BEEF 9139

DAM: EASY RAY PAULA 47B

EASY RAY PAULA 44S

BW: 89	BW	WW	YW	MILK	DMI	CE	MARB	REA
WW: 756	3.9	56	105	23	0.57	-1.0	0.38	0.61
YW: 1207								

•Cow Bull

Lots of growth and performance on this guy and a bonus is his rebeye and milk EPD.



LOT
35

EASY RAY TIMELESS 105H

2164932 • EA 105H • January 12, 2020

WMR TIMELESS58

SIRE: ALLENCROFT TIMELES 03 348E

ALLENCROFT ROSEBUD 01 327A

WILLABAR FUTURE DIRECTION 71R

DAM: EASY RAY LUCY 28W

EASY RAY LUCY 8R

BW: 79	BW	WW	YW	MILK	DMI	CE	MARB	REA
WW: 718	0.4	52	83	23	0.21	8.0	0.31	0.49
YW: 1195								

•Heifer Bull

He weaned at 718 pounds, TIMELESS will leave you with some moderate sized cows.

LOT
37

EASY RAY ABSOLUTE 111H

2164936 • EA 111H • January 13, 2020

K C F BENNETT ABSOLUTE

SIRE: GURNEY ABSOLUTE 4D

GURNEY NEONIA 83B

BENCHMARK CATALYST 135'11

DAM: EASY RAY CATALYST 99B

EASY RAY LUCY 31Z

BW: 90	BW	WW	YW	MILK	DMI	CE	MARB	REA
WW: 780	4.6	77	125	20	0.92	-3.0	0.53	0.31
YW: 1238								

•Cow Bull

He's proven himself at Easy Ray, a standout in the pen with EPDs to go with it. +77 WW & +125 YW!

LOT
36

EASY RAY BLASTER 110H

2165067 • EA 110H • January 12, 2020

BRUNS BLASTER

SIRE: BORDER BUTTE BLASTER 323E

BORDER BUTTE EVE 217C

JF FINALIZE B28

DAM: EASY RAY ERICA 175D

EASY RAY ERICA 123C

BW: 78	BW	WW	YW	MILK	DMI	CE	MARB	REA
WW: 777	1.5	70	122	27	1.01	10.0	0.65	0.49
YW: 1254								

•Heifer Bull

Another high calving ease bull out of BLASTER, he has solid EPDs and is a solid looking bull.



LOT
38

EASY RAY BLASTER 116H

2164559 • EA 116H • January 14, 2020

BRUNS BLASTER

SIRE: BORDER BUTTE BLASTER 323E

BORDER BUTTE EVE 217C

BORDER BUTTE EARNAN 29C

DAM: EASY RAY BARDELLA 120E

EASY RAY BARDELLA 101B

BW: 75	BW	WW	YW	MILK	DMI	CE	MARB	REA
WW: 773	2.7	78	135	29	1.56	4.0	0.50	0.36
YW: 1182								

•Heifer Bull

He's a herd bull prospect with great looking numbers all around. He excels in carcass. He went from 77-773 in 205 days.

YEARLING BLACK ANGUS BULLS

LOT
39

EASY RAY ABSOLUTE 120H

2164938 • EA 120H • January 15, 2020

K C F BENNETT ABSOLUTE

SIRE: GURNEY ABSOLUTE 4D

GURNEY NEONIA 83B

FF PLATINUM Z126

DAM: EASY RAY BARDELLA 81B

EASY RAY BARDELLA 49Z

BW: 83	BW	WW	YW	MILK	DMI	CE	MARB	REA
WW: 712	3.0	58	113	18	1.03	2.0	0.50	0.46
YW: 1230								

• Cow Bull

He is one of the last ABSOLUTE bulls we have on offer and he's a growth and performance specialist. His dam is really good cow.



LOT
40

EASY RAY UNANIMOUS 121H

2164940 • EA 121H • January 15, 2020

VISION UNANIMOUS 1418

SIRE: WESTERN UNANIMOUS 718

WESTERN MISSIE 201

EASY RAY IN FOCUS 3U

DAM: EASY RAY COUNTESS 32Z

EASY RAY COUNTESS 38U

BW: 76	BW	WW	YW	MILK	DMI	CE	MARB	REA
WW: 719	0.9	57	103	32	1.21	8.0	0.45	0.73
YW: 1244								

• Heifer Bull

A smooth looking bull out of UNANIMOUS, calving ease and carcass all in one great looking package.



LOT
41

EASY RAY ABSOLUTE 124H

2164907 • EA 124H • January 15, 2020

K C F BENNETT ABSOLUTE

SIRE: GURNEY ABSOLUTE 4D

GURNEY NEONIA 83B

SOUTHLAND FREEDOM 74T

DAM: EASY RAY KATE 64Y

EASY RAY KATE 92P

BW: 94	BW	WW	YW	MILK	DMI	CE	MARB	REA
WW: 745	2.9	46	71	29	-0.25	0	0.64	0.69
YW: 1239								

• Cow Bull

Lots of growth and performance right here, he will greatly improve ribeye and marbling in any herd. Moderate framed Dam is a chunk of a cow.



LOT
42

EASY RAY PRIME CUT 127H

2164654 • EA 127H • January 16, 2020

HA PRIME CUT 4493

SIRE: U2 PRIME CUT 472D

U2 ERELITE 109Z

ALLEN CROFT UPWARD 07 215X

DAM: EASY RAY ZARA 43C

EASY RAY ZARA 32U

BW: 94	BW	WW	YW	MILK	DMI	CE	MARB	REA
WW: 821	3.5	76	131	31	0.99	1.0	0.50	0.57
YW: 1296								

• Cow Bull

A PRIME CUT red meat machine, your eyes will pop when you see him. Very valuable Feed and Carcass traits.



YEARLING BLACK ANGUS BULLS

LOT
43

EASY RAY BLASTER 128H

2164929 • EA 128H • January 16, 2020

BRUNS BLASTER

SIRE: BORDER BUTTE BLASTER 323E

BORDER BUTTE EVE 217C

ALLENCROFT II IMPACT 07 3B

DAM: EASY RAY BEULAH 45E

EASY RAY BEULAH 56W

BW: 78	BW	WW	YW	MILK	DMI	CE	MARB	REA
WW: 660	2.0	76	130	39	1.16	3.0	0.61	0.81
YW: 1255								

•Cow Bull

A bull that excells in ribeye, marbling and carcass wt, you're gonna like him.



Sire Of 130H

LOT
44

EASY RAY VISION 130H

2165097 • EA 130H • January 17, 2020

JINDRA DOUBLE VISION

SIRE: BORDER BUTTE PRIME VISION 451D

SAV PRIMROSE 7861

ALLENCROFT UPWARD 07 215X

DAM: EASY RAY PAULA 30C

EASY RAY PAULA 41Y

BW: 93	BW	WW	YW	MILK	DMI	CE	MARB	REA
WW: 833	2.9	73	131	29	0.85	3.0	0.40	0.28
YW: 1285								

•Cow Bull

A herd bull prospect who went from 93-833 in 205 days. Dam and GrandDam are Elite cows. He's got great EPDs, the type you want to take home with you.



130H

LOT
45

EASY RAY VISION 131H

2165078 • EA 131H • January 17, 2020

JINDRA DOUBLE VISION

SIRE: BORDER BUTTE PRIME VISION 451D

SAV PRIMROSE 7861

TED FINAL ANSWER 2W

DAM: EASY RAY LASS 47A

EASY RAY LASS 60N

BW: 90	BW	WW	YW	MILK	DMI	CE	MARB	REA
WW: 688	4.3	46	88	28	0.37	0	0.26	0.38
YW: 1147								

•Cow Bull

He's a very average bull with moderate EPDs.

LOT
47

EASY RAY UNANIMOUS 133H

2178431 • EA 133H • January 17, 2020

VISION UNANIMOUS 1418

SIRE: WESTERN UNANIMOUS 718

WESTERN MISSIE 201

ALLENCROFT IMPACT 03 321C

DAM: EASY RAY KATE 77E

EASY RAY KATE 48C

BW: 87	BW	WW	YW	MILK	DMI	CE	MARB	REA
WW: 749	4.2	65	106	16	0.63	-8.0	0.51	0.78
YW: 1196								

•Cow Bull

He has a moderate calving ease, his carcass traits are an added bonus. Grand Dam is an Elite cow.

LOT
46

EASY RAY BLASTER 132H

2164928 • EA 132H • January 17, 2020

BRUNS BLASTER

SIRE: BORDER BUTTE BLASTER 323E

BORDER BUTTE EVE 217C

ALLENCROFT IMPACT 03 321C

DAM: EASY RAY ZARA 175E

EASY RAY ZARA 21R

BW: 83	BW	WW	YW	MILK	DMI	CE	MARB	REA
WW: 754	1.1	63	104	33	0.82	10.0	0.48	0.47
YW: 1247								

•Heifer Bull

A sure footed, powerful bull with lots of growth and +10 calving ease.



132H

YEARLING BLACK ANGUS BULLS

LOT
48

EASY RAY ACCLAIM 135H

2164506 • EA 135H • January 17, 2020

JINDRA ACCLAIM

SIRE: WESTERN ACCLAIM 822
WESTERN BLACKCLASS 37P
ALLENCROFT II IMPACT 07 3B

DAM: EASY RAY LUCY 180F
EASY RAY LUCY 20C

BW: 68	BW	WW	YW	MILK	DMI	CE	MARB	REA
WW: 645	0.4	47	87	21	-	9.0	-	-
YW: 1074								

• Heifer Bull

Let him be the sire the first time around, you'll be doing yourself a favour.



LOT
49

EASY RAY VISION 136H

2164882 • EA 136H • January 18, 2020

JINDRA DOUBLE VISION

SIRE: BORDER BUTTE PRIME VISION 451D
SAV PRIMROSE 7861
BENCHMARK CATALYST 135'11

DAM: EASY RAY ELLA 23B
EASY RAY ELLA 87Z

BW: 95	BW	WW	YW	MILK	DMI	CE	MARB	REA
WW: 786	3.2	64	110	30	0.38	3.0	0.72	0.24
YW: 1325								

• Cow Bull

Dam is an Elite cow. He's got such great numbers, growth and carcass! He's one of our top gainers.



LOT
50

EASY RAY BLASTER 138H

2164921 • EA 138H • January 18, 2020

BRUNS BLASTER

SIRE: BORDER BUTTE BLASTER 323E
BORDER BUTTE EVE 217C
BORDER BUTTE EARNAN 29C

DAM: EASY RAY LASS 42E
EASY RAY LASS 84B

BW: 84	BW	WW	YW	MILK	DMI	CE	MARB	REA
WW: 724	4.5	73	137	24	1.55	-4.0	0.34	0.29
YW: 1206								

• Cow Bull

BLASTER did it agin! High marks for growth and carcass weights.

LOT
52

EASY RAY TIMELESS 146H

2164909 • EA 146H • January 20, 2020

WMR TIMELESS58

SIRE: ALLENCROFT TIMELES 03 348E
ALLENCROFT ROSEBUD 01 327A
WESTERN DESIGN 517

DAM: EASY RAY LUCY 58U
EASY RAY LUCY 36R

BW: 82	BW	WW	YW	MILK	DMI	CE	MARB	REA
WW: 748	1.2	61	105	24	0.86	11.0	0.35	0.27
YW: 1198								

• Heifer Bull

Another high calving ease bull out of TIMELESS. His Dam just had her 13th calf.

LOT
51

EASY RAY ABSOLUTE 144H

2164916 • EA 144H • January 20, 2020

K C F BENNETT ABSOLUTE

SIRE: GURNEY ABSOLUTE 4D
GURNEY NEONIA 83B
TED FINAL ANSWER 2W

DAM: EASY RAY ELBA 2A
EASY RAY ELBA 55W

BW: 90	BW	WW	YW	MILK	DMI	CE	MARB	REA
WW: 698	3.9	62	114	30	1.03	-2.0	0.15	0.55
YW: 1184								

• Cow Bull

He will add carcass, growth and performance to your herd. Grand-Dam is an Elite cow.

LOT
53

EASY RAY CAVALIER 150H

2164688 • EA 150H • January 20, 2020

REMITALL F CAVALIER 67C

SIRE: REMITALL F CAVALIER 37F
REMITALL F KARAMA 174D
LWNBRG UNANIMOUS 149D

DAM: EASY RAY ELBA 21F
EASY RAY ELBA 122B

BW: 66	BW	WW	YW	MILK	DMI	CE	MARB	REA
WW: 780	-0.7	62	111	27	-	11.0	-	-
YW: 1304								

• Herd Bull

A heifer bull that went from 66 pounds to 780 in 205 days. He was one of many that weighed over 1300lbs on Dec 31st. Dam is a heifer.

YEARLING BLACK ANGUS BULLS

LOT
54

EASY RAY UNANIMOUS 155H

2165090 • EA 155H • January 20, 2020

VISION UNANIMOUS 1418
SIRE: WESTERN UNANIMOUS 718
WESTERN MISSIE 201
EASY RAY IN FOCUS 3U
DAM: EASY RAY PAULA 23Z
EASY RAY PAULA 40U

BW: 88	BW	WW	YW	MILK	DMI	CE	MARB	REA
WW: 699	6.0	69	139	32	1.28	-4.0	0.45	0.55
YW: 1160								

•Cow Bull

Just look at his credentials all across that EPD board, perfect numbers all around. GrandDam and great GrandDam are Elite cows.

LOT
55

EASY RAY CAVALIER 159H

2164598 • EA 159H • January 21, 2020

REMITALL F CAVALIER 67C
SIRE: REMITALL F CAVALIER 37F
REMITALL F KARAMA 174D
LWNBRG UNANIMOUS 149D
DAM: EASY RAY FREDA 79F
EASY RAY FREDA 53B

BW: 75	BW	WW	YW	MILK	DMI	CE	MARB	REA
WW: 664	0.5	54	99	22	-	7.0	-	-
YW: 1081								

•Heifer Bull

His Dam, FREDA 79F, is a beauty. Great GrandDam is an Elite. Super calving ease on this guy, out of that Cavalier line.



LOT
56

EASY RAY UNANIMOUS 160H

2164599 • EA 160H • January 21, 2020

VISION UNANIMOUS 1418
SIRE: WESTERN UNANIMOUS 718
WESTERN MISSIE 201
BORDER BUTTE EARNAN 29C
DAM: EASY RAY COUNTESS 135E
EASY RAY COUNTESS 2B

BW: 94	BW	WW	YW	MILK	DMI	CE	MARB	REA
WW: 748	6.5	73	127	17	1.20	-9.0	0.39	0.51
YW: 1168								

•Cow Bull

This bull has shown great performance EPDs as he is in the top 1% for WW & YW.

LOT
57

EASY RAY VISION 166H

2165077 • EA 166H • January 22, 2020

JINDRA DOUBLE VISION
SIRE: BORDER BUTTE PRIME VISION 451D
SAV PRIMROSE 7861
BENCHMARK EFFICIENCY 0102
DAM: EASY RAY ELLA 104A
EASY RAY ELLA 97Z

BW: 93	BW	WW	YW	MILK	DMI	CE	MARB	REA
WW: 854	2.6	68	111	33	0.43	4.0	0.54	0.45
YW: 1278								

•Cow Bull

Moderate calving ease and he's in the top 1% for MILK. He weighed just shy of 1300lbs at 1 year, she should sire a nice set of steers.



LOT
58

EASY RAY VISION 173H

2165076 • EA 173H • January 24, 2020

JINDRA DOUBLE VISION
SIRE: BORDER BUTTE PRIME VISION 451D
SAV PRIMROSE 7861
TED FINAL ANSWER 2W
DAM: EASY RAY LUCY 87B
EASY RAY LUCY 38T

BW: 2.9	BW	WW	YW	MILK	DMI	CE	MARB	REA
WW: 49	2.9	49	90	28	0.26	2.0	0.55	0.25
YW: 90								

•Cow Bull

He's showing moderate calving ease as well as growth. Dam is an Elite cow and she fits the criteria so well, great genetics.

YEARLING BLACK ANGUS BULLS



LOT
59

EASY RAY ABSOLUTE 175H

2164948 • EA 175H • January 24, 2020

K C F BENNETT ABSOLUTE
SIRE: GURNEY ABSOLUTE 4D
GURNEY NEONIA 83B
BORDER BUTTE FINAL ANSWER 111A
DAM: EASY RAY ZARA 31D
EASY RAY ZARA 71X

BW: 85	BW	WW	YW	MILK	DMI	CE	MARB	REA
WW: 656	3.0	59	102	31	0.63	4.0	0.40	0.35
YW: 1230								

•Cow Bull

He can be used on bigger heifers as well, he has moderate calving ease. He is in the top 2% for Milk.

LOT
62

EASY RAY UNANIMOUS 187H

2164368 • EA 187H • January 27, 2020

VISION UNANIMOUS 1418
SIRE: WESTERN UNANIMOUS 718
WESTERN MISSIE 201
WESTERN DESIGN 517
DAM: EASY RAY ZARA 49T
EASY RAY ZARA 21R

BW: 96	BW	WW	YW	MILK	DMI	CE	MARB	REA
WW: 780	2.3	54	99	36	0.62	3.0	0.54	0.42
YW: 1280								

•Cow Bull

This guy started out at 96lbs and got a head start so he could reach 780lbs at weaning. Just today, his Dam had her 14th calf.

LOT
60

EASY RAY BLASTER 176H

2164545 • EA 176H • January 25, 2020

BRUNS BLASTER
SIRE: BORDER BUTTE BLASTER 323E
BORDER BUTTE EVE 217C
BORDER BUTTE FINAL ANSWER 111A
DAM: EASY RAY PAULA 6E
EASY RAY PAULA 63A

BW: 95	BW	WW	YW	MILK	DMI	CE	MARB	REA
WW: 720	4.5	69	122	27	1.19	1.0	0.36	0.32
YW: 1242								

•Cow Bull

Awesome growth and performance on this bull. These BLASTER sons' growth and milk are right up there with the best.

LOT
63

EASY RAY VISION 190H

2165082 • EA 190H • January 28, 2020

JINDRA DOUBLE VISION
SIRE: BORDER BUTTE PRIME VISION 451D
SAV PRIMROSE 7861
BENCHMARK PREMIUM BEEF 9139
DAM: EASY RAY COUNTESS 40Y
EASY RAY COUNTESS 46W

BW: 92	BW	WW	YW	MILK	DMI	CE	MARB	REA
WW: 784	2.9	56	103	32	0.43	2.0	0.63	0.27
YW: 1312								

•Cow Bull

Moderate calving ease. He scored high points for growth, milk and marbling. His Dam is one that we'd like to keep forever.

LOT
61

EASY RAY UNANIMOUS 180H

2164724 • EA 180H • January 25, 2020

VISION UNANIMOUS 1418
SIRE: WESTERN UNANIMOUS 718
WESTERN MISSIE 201
ALLEN CROFT IMPACT 03 321C
DAM: EASY RAY ZARA 190D
EASY RAY ZARA 42C

BW: 98	BW	WW	YW	MILK	DMI	CE	MARB	REA
WW: 737	5.6	69	115	17	0.69	-7.0	0.42	0.48
YW: 1227								

•Cow Bull

Lots of growth and performance, way above the breed average. Unanimous was the high seller at the Western Sale in 2018 and we got him.

LOT
64

EASY RAY UNANIMOUS 194H

2164933 • EA 194H • January 28, 2020

VISION UNANIMOUS 1418
SIRE: WESTERN UNANIMOUS 718
WESTERN MISSIE 201
TED FINAL ANSWER 2W
DAM: EASY RAY LASS 52B
EASY RAY LASS 10U

BW: 85	BW	WW	YW	MILK	DMI	CE	MARB	REA
WW: 727	1.2	54	95	28	0.65	6.0	0.74	0.58
YW: 1137								

•Heifer Bull

Very high marks for marbling and REA. His Dam is an Elite cow. His progeny will perform.

YEARLING BLACK ANGUS BULLS

LOT
65

EASY RAY TIMELESS 195H

2166105 • EA 195H • January 29, 2020

WMR TIMELESS58

SIRE: ALLENCROFT TIMELES 03 348E

ALLENCROFT ROSEBUD 01 327A

BENCHMARK CATALYST 135'11

DAM: EASY RAY LASS 10B

EASY RAY LASS 99Y

BW: 94	BW	WW	YW	MILK	DMI	CE	MARB	REA
WW: 820	4.1	69	115	25	0.52	3.0	0.30	0.44
YW: 1240								

• Cow Bull

Moderate calving ease and nice WW-YW EPDs, he weighed up nicely at 820lbs. You can't go wrong here.



LOT
66

EASY RAY TIMELESS 205H

2165089 • EA 205H • February 3, 2020

WMR TIMELESS58

SIRE: ALLENCROFT TIMELES 03 348E

ALLENCROFT ROSEBUD 01 327A

BORDER BUTTE FINAL ANSWER 111A

DAM: EASY RAY COUNTESS 124D

EASY RAY COUNTESS 40Y

BW: 89	BW	WW	YW	MILK	DMI	CE	MARB	REA
WW: 754	1.7	62	106	26	0.39	7.0	0.63	0.58
YW: 1280								

• Cow Bull

He can also be used on those growthy heifers. Just awesome looking EPDs that he will pass on to his progeny.



LOT
67

EASY RAY CAVALIER 219H

2164562 • EA 219H • February 5, 2020

REMITALL F CAVALIER 67C

SIRE: REMITALL F CAVALIER 37F

REMITALL F KARAMA 174D

REMITALL F BRIGADIER 53D

DAM: EASY RAY BARDELLA 49F

EASY RAY BARDELLA 49Z

BW: 88	BW	WW	YW	MILK	DMI	CE	MARB	REA
WW: 724	4.3	65	115	20	-	-4.0	-	-
YW: 1148								

• Cow Bull

He was a heifer's first calf. GrandDam is an Elite cow. 49F had this calf on her own as Cavalier is a calving ease bull.



LOT
68

EASY RAY BLASTER 226H

2164590 • EA 226H • February 6, 2020

BRUNS BLASTER

SIRE: BORDER BUTTE BLASTER 323E

BORDER BUTTE EVE 217C

HF TIGER 161A

DAM: EASY RAY COUNTESS 39E

EASY RAY COUNTESS 38U

BW: 95	BW	WW	YW	MILK	DMI	CE	MARB	REA
WW: 681	6.1	67	121	28	1.38	-3.0	0.46	0.49
YW: 1231								

• Cow Bull

Another high scoring BLASTER son, he will improve carcass quality, besides bringing along performance.



YEARLING BLACK ANGUS BULLS

LOT
69

EASY RAY ABSOLUTE 242H

2164513 • EA 242H • February 12, 2020

K C F BENNETT ABSOLUTE

SIRE: GURNEY ABSOLUTE 4D

GURNEY NEONIA 83B

ALLEN CROFT UPWARD 07 215X

DAM: EASY RAY KATE 48C

EASY RAY KATE 28X

BW: 96	BW	WW	YW	MILK	DMI	CE	MARB	REA
WW: 813	2.3	63	106	31	0.49	3.0	0.46	0.48
YW: 1263								

•Cow Bull

High marks, once again, for WW & YW. Excellent carcass quality and Milk. Dam is an Elite cow.



LOT
70

EASY RAY BLASTER 251H

2164915 • EA 251H • February 15, 2020

BRUNS BLASTER

SIRE: BORDER BUTTE BLASTER 323E

BORDER BUTTE EVE 217C

ALLEN CROFT IMPACT 03 321C

DAM: EASY RAY LUCY 138E

EASY RAY LUCY 2T

BW: 83	BW	WW	YW	MILK	DMI	CE	MARB	REA
WW: 677	3.6	81	139	27	1.58	2.0	0.05	0.24
YW: 1258								

•Cow Bull

Blaster has stamped another one of his progeny with the top 1% for growth, milk and docility.

LOT
71

EASY RAY TIMELESS 256H

2164879 • EA 256H • February 17, 2020

WMR TIMELESS58

SIRE: ALLEN CROFT TIMELES 03 348E

ALLEN CROFT ROSEBUD 01 327A

BORDER BUTTE EARNAN 29C

DAM: EASY RAY LASS 104E

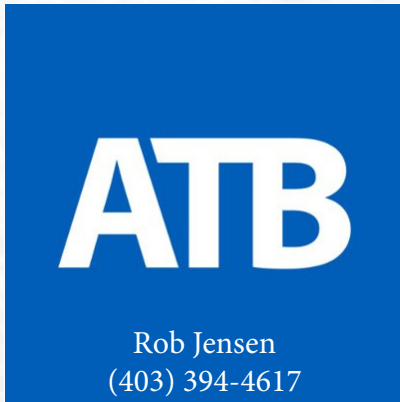
EASY RAY LASS 126B

BW: 77	BW	WW	YW	MILK	DMI	CE	MARB	REA
WW: 781	1.6	70	119	22	-	7.0	-	-
YW: 1221								

•Heifer Bull

His GrandDam is an Elite Premiere cow. He's in the top 2% WW and top 4% YW. He can service the cow herd when he gets too big.

A BIG THANK YOU TO OUR 2021 SALE SPONSORS



South Country



BMB BREWIN ANGUS



Welcome everyone to our 13th year as guest consignor with Easy Ray Angus. This year we have a tremendous set of bulls that we are bringing to town for the sale. This year we decided that we would bring along some of our 2 year old bulls to the sale. All bulls will be semen tested and vet checked prior to the sale. As always we will be selling a strong group of approximately 50 quality Red Angus commercial replacement heifers. The majority of this fantastic group of heifers are from our purebred herd program. There will be a few groups of registered heifers that will be sold without papers. We invite and encourage all past and future buyers to come out to the farm to look at the bulls and heifers that we have on offer prior to the sale. With much gratitude and appreciation we would like to thank our past customers, Perlich Bros Auction Mart and fellow producers for their continued support over the years. We look forward to seeing you at the sale and if you can't make it due the weather conditions, cows having untimely calving issues or due to COVID-19 restrictions, rest assured we will be broadcasting on DLMS. Please feel free to contact us with any questions you may have and keep an eye out on our facebook page on the bulls and heifers consigned to the sale for more pictures and upcoming videos.

Brent, Myrna, Devin & Janessa

Herd Health:

BMB Brewin Angus utilize a complete herd health program to ensure the health and performance of their livestock. The breeding herd receives yearly preventative 8-way clostridial, 5-way viral and scour pathogen vaccination which protects the cows and newborn calves. At birth, calves receive intranasal viral pneumonia immunizations and a preventative coccidiosis medicine. At spring turn out and weaning, calves are vaccinated with a 5-way viral with Mannheimia Haemolytica along with a 7-way clostridial with Histophilus Somni. Routine deworming and free choice mineral supplementation are used within the herd to keep the animals in tip top health. Returning and future buyers can be confident that cattle from BMB Brewin Angus will come prepared to work on your ranch whether it is a new bred heifer or the next herd sire.

Cory Davis, DVM
Coaldale Veterinary Clinic & Taber Cattle Clinic

Directions:

From Grassy Lake - 7 miles south on Hwy 877, turn west on Twp Rd 9-2 for 3 miles. South on Rg Rd 14-0 for 0.5 miles.



**TABER CATTLE
CLINIC**

403-223-2000
office@tabercattleclinic.com
6303 55 St. Taber, AB

REFERENCE SIRES



RED TR PILSNER 230E

1970165 | CBT 230E | MARCH 23, 2017

SIRE: RED COCKBURN X-RATED 511X
 RED YCR BREWSTER 1446B
 RED YARROW CREEK MINOLA 6S
 RED TR ESCALDE 318T
 DAM: RED TR LAKIMA 1154Y
 RED TOP LAKIMA 706

BW	WW	YW	BW	WW	YW	MILK	CE	MCE
90	754	1306	3.7	48	75	27	-2	5



RED LAZY MC TRADITION 111C

1859022 | CBM 111C | FEBRUARY 12, 2015

SIRE: RED LAZY MC EYE SPY 64Y
 RED WPRA LEGACY A-314
 RED WPRA EVERLEDA ENTENSE 610
 RED LAZY MC SMASH 41N
 DAM: RED LAZY MC FIREFLY 78R
 RED LAZY MC MISS FIREFLY 61L

BW	WW	YW	BW	WW	YW	MILK	CE	MCE
94	802	1275	2.7	33	58	23	-2	2

RED NCJ LAZY MC RAMBLIN MAN 305B

1829554 | IMP 305B | MARCH 21, 2014

SIRE: RED SSS SOLDIER 365W
 RED LAZY MC TROOPER 21Y
 LAZY MC EXPRESS 60W
 RED BECKTON JULIAN GG B571
 DAM: RED HXC JOLENE 301N
 RED HXC JAYLO LB136

BW	WW	YW	BW	WW	YW	MILK	CE	MCE
81	708	1377	-1.1	33	63	27	5	5



RED SHILOH FEAR FACTOR 85F

2022005 | SCCA 85F | FEBRUARY 3, 2018

SIRE: RED XO CROWFOOT REBEL 2422Z
 RED CIRCLE G CARGO 8C
 RED CG THELMA 119Y
 RED HLH BUSTER 406 603
 DAM: RED SHILOH UNKISSED 39U
 RED TOMAHAWK DUCHESS 29S

BW	WW	YW	BW	WW	YW	MILK	CE	MCE
80	707	1249	0.2	45	92	22	6	10



YEARLING RED ANGUS BULLS



DAM: BLJ 50C



SELLING FULL POSSESSION & 1/2 SEMEN INTEREST

RED BLJ HOWIE 50H

2153423 | BLJ 50H | FEBRUARY 5, 2020

RED DKF RAZOR 55C
 SIRE: RED DKF RACER 8E
 RED DKFE MISS ACE 84C
 RED GET-A-LONG WANDER 905
 DAM: RED BLJ MISTY 50C
 RED BLJ MISS FIRE 25A

BW	WW	BW	WW	YW	MILK	CE	MCE
95	631	2.4	37	67	21	1	5

This is a bull who has been a stand out on pasture and in the pen. He is wide topped, deep bodied with lots of natural muscle expression with a good foot. Dam Red BLJ Misty 50C goes back to a female Janessa purchased from Thistle Ridge Ranch. This being one of her foundation cow families. Sired by the many time Grand Champion Bull Red DKF Racer 8E, who was Grand Champion Red Angus Bull at Agribition 2018 & 2019 - FarmFair 2018 - Olds Fall Classic 2018 & 2019 - Stockade Round-up 2019. Maternal brother to Lot #19B/BLJ 50G.



DAMS SIRE: RKT 18C



RED BMB HALVARD 14H

2157336 | BMB 14H | JANUARY 29, 2020

RED CIRCLE G CARGO 8C
 SIRE: RED SHILOH FEAR FACTOR 85F
 RED SHILOH UNKISSED 39U
 RED TRIPLE L JAGGER 18C
 DAM: RED ROCK POINT ROSALINE 14F
 RED J BAR DEE ROSALINE

BW	WW	BW	WW	YW	MILK	CE	MCE
75	720	0.7	47	82	27	4	6

Excellent restful sleep calving ease bull. Sired by our herd bull Red Shiloh Fear Factor 85F. He has a gentle and quiet disposition. Out of a first calf heifer who has done an amazing job on raising this calf. He is soft made and smooth shouldered. He has been our favourite in the bull pen as a heifer bull. His dam Red Rock Point Rosaline 14F is a heifer we bought as a calf from Rock Point Angus, who goes back to Red Six Mile & Co Jagger 780A.

YEARLING RED ANGUS BULLS



**LOT
3B**

RED BMB HUTCHISON 210H

2173117 | BMB 210H | FEBRUARY 1, 2020

RED BUF CRK THE RIGHT KINDU199
 SIRE: RED 3J ONE OF A KIND A228
 RED BADLANDS CEDAR 922
 RED LAZY MC EYE SPY 64Y
 DAM: RED BMB FANNY J 210E
 RED BMB FANNY J 119W

BW	WW	BW	WW	YW	MILK	CE	MCE
76	599	-0.8	33	67	21	8	9

Super calving ease heifer bull. Long spined, smooth made. Granddam is a premiere dam. Dam is a Lazy MC Eye Spy daughter.



**LOT
4B**

RED BMB HARDTACK 215H

2158685 | BMB 215H | FEBRUARY 11, 2020

RED LAZY MC TROOPER 21Y
 SIRE: RED NCJ LAZY MC RAMBLIN MAN 305B
 RED HXC JOLENE 301N
 RED BRYLOR SDL PASQUALE 213P
 DAM: RED BMB FANNY P 215X
 RED CYT FANNY 15P

BW	WW	BW	WW	YW	MILK	CE	MCE
72	581	-3.3	28	52	22	12	10

Screams Heifer Bull with a stacked pedigree for calving ease. Maternal sibling to Lot 21B. Bryon Wehlage, Pinhorn Grazing Association and Gene & Kelly Westwick all have maternal brothers to 215H.



**LOT
5B**

RED BMB HARKIN 704H

2158864 | BMB 704H | JANUARY 30, 2020

RED MRLA NEW ERA 87Y
 SIRE: RED MRLA MILLENIUM 75B
 RED MRLA MISS 580U
 RED BMB NORSE 382Z
 DAM: RED BMB FANNY B 704B
 RED BMB FANNY 22T

BW	WW	BW	WW	YW	MILK	CE	MCE
76	626	-0.6	37	66	22	7	8

Here is a smooth made heifer bull with a strong top line, natural hip on a good foot. His dam goes back to our CYT Fanny 15P cow line, which has produced a few keepers in our herd. Maternal brother sold to Rowland Farms last year.



**LOT
6B**

RED BMB HIGHBALL 701H

2158687 | BMB 701H | FEBRUARY 12, 2020

RED LAZY MC TROOPER 21Y
 SIRE: RED NCJ LAZY MC RAMBLIN MAN 305B
 RED HXC JOLENE 301N
 RED TR INVASION 18Y
 DAM: RED BMB ANGIE 701B
 RED WILBAR ANGIE 837T

BW	WW	BW	WW	YW	MILK	CE	MCE
74	625	-1.4	33	61	23	-1	1

Another strong deep bodied heifer bull out of Red NCJ Lazy MC Ramblin Man. A maternal brother of Highball was purchased by Livingstone Colony and we have retained a sister in our herd.

YEARLING RED ANGUS BULLS



**LOT
7B**

RED BMB HOPKINS 39H

2176174 | BMB 39H | FEBRUARY 25, 2020

RED YCR BREWSTER 1446B
 SIRE: RED TR PILSNER 230E
 RED TR LAKIMA 1154Y
 RED SOO LINE REVOLUTION 8094
 DAM: RED DWAJO SCAARA 39A
 RED WILBAR SCAARA 680S

BW	WW	BW	WW	YW	MILK	CE	MCE
97	709	5.1	49	79	24	-8	2

Bigger birth weight on this cow bull, he will go out and give you steer calves that will push the scale down. Dam is a SooLine Revolution Daughter.



**LOT
8B**

RED BMB HEATON 618H

2157319 | BMB 618H | JANUARY 27, 2020

RED WPRA LEGACY A-314
 SIRE: RED LAZY MC TRADITION 111C
 RED LAZY MC FIREFLY 78R
 RED BASIN MAX 215G
 DAM: RED BMB DELIGHT 618B
 RED BMB DELIGHT 98W

BW	WW	BW	WW	YW	MILK	CE	MCE
80	649	-0.2	36	55	25	6	4

Cow bull or use on larger heifers. Nice moderate framed, deep bodied with natural muscle expression. His dam consistently throws lower BW. Maternal sibling to John & Bev Mcleod and one female in our herd. Granddam is an elite dam whom we have several females from in our herd and produced our high selling bull in 2018 to Cecil Weisgerber.



**LOT
9B**

RED BMB HONEY DEW 683H

2179253 | BMB 683H | FEBRUARY 8, 2020

RED SSS SOLDIER 365W
 SIRE: RED LAZY MC SERGEANT 97Z
 RED LAZY MC GOLD DESIGN 68U
 RED TOWAW MARVEL 404A
 DAM: RED CINDER BIEBIRD 683D
 RED CINDER BIEBIRD 883B

BW	WW	BW	WW	YW	MILK	CE	MCE
86	631	1.2	33	54	26	3	8

Here we have a long spined, thick growthy cow bull with lots of natural muscle shape and loads of hair out of a 4 year old dam who already has one daughter working in our herd.



**LOT
10B**

RED BMB HACKBERRY 862H

2158682 | BMB 862H | FEBRUARY 11, 2020

RED WPRA LEGACY A-314
 SIRE: RED LAZY MC TRADITION 111C
 RED LAZY MC FIREFLY 78R
 RED NCJ YOU'RE CANADIAN 2A
 DAM: RED BMB CATERINA 862C
 RED BMB CATERINA 211X

BW	WW	BW	WW	YW	MILK	CE	MCE
94	675	2.5	35	65	26	-1	0

Deep sided, great muscle expression, spring of rib with a great hair coat. We have a maternal sibling working in our herd and brothers at Rowland Farms & Midway. Paternal sibling to Lot 8B/ BMB 618H.& Lot 23B/BMB 365G.

YEARLING RED ANGUS BULLS



**LOT
11B**

RED BMB HOOVER 183H

2157367 | BMB 183H | FEBRUARY 3, 2020

RED CIRCLE G CARGO 8C
 SIRE: RED SHILOH FEAR FACTOR 85F
 RED SHILOH UNKISSSED 39U
 RED NCJ LAZY MC VENOM 34Z
 DAM: RED SCARLET SHEILA 183F
 RED BMB SCARLET SHEILA 250Y

BW	WW	BW	WW	YW	MILK	CE	MCE
90	694	2.3	49	90	22	-1	6

Dark red, smooth made cow bull with lots of middle and natural muscle. Dam goes back to a Diamond T Hip Stout Female who produced our high selling bull in 2020 to Chin Coulee Cattle Company. Paternal sibling to Lot 2B & 14B.



**LOT
12B**

RED BMB HALFBACK 222H

2176196 | BMB 222H | FEBRUARY 28, 2020

RED YCR BREWSTER 1446B
 SIRE: RED TR PILSNER 230E
 RED TR LAKIMA 1154Y
 RED BROWN JYJ REDEMPTION Y1334
 DAM: RED BMB YOLO 222E
 RED YOLO BEAUTY 9B

BW	WW	BW	WW	YW	MILK	CE	MCE
83	688	0.5	47	83	23	6	9

Moderate framed smooth made bull with good length, depth, and natural muscle expression. Use on larger heifers. Paternal sibling to Lot 7B/BMB 39H.



**LOT
13B**

RED BMB HUMMUS 779H

2158677 | BMB 779H | FEBRUARY 8, 2020

RED SSS OLY 554T
 SIRE: RED 1EN BEST MAN C401
 RED WCR MISS FLORESS EX A155
 RED BIEBER ROLLIN DEEP Y118
 DAM: RED BMB ARDATH 779C
 RED SHODEREE ARDATH 31T

BW	WW	BW	WW	YW	MILK	CE	MCE
75	596	-0.1	32	62	25	8	7

A very complete calving ease bull with a great hair coat and proper structure. We have several females on the dam side working in our herd.



**LOT
14B**

RED BMB HUCK 281H

2180110 | BMB 281H | JANUARY 31, 2020

RED CIRCLE G CARGO 8C
 SIRE: RED SHILOH FEAR FACTOR 85F
 RED SHILOH UNKISSSED 39U
 RED DOUBLE C DIESEL 218D
 DAM: RED BMB BABY 281F
 RED BMB BABY 737B

BW	WW	BW	WW	YW	MILK	CE	MCE
70	607	-1	40	75	23	8	9

A stunning sharp fronted smooth made heifer bull. A well profiled bull, sure grabs attention in the pen with those big fluffy ears.

YEARLING RED ANGUS BULLS



**LOT
15B**

RED BMB HYMAN 776H

2157329 | BMB 776H | JANUARY 28, 2020

DKF ELIMINATOR 15A
 SIRE: RED DKF RAZOR 55C
 DKF MISS NET WORTH 21A
 RED LONE STONE PRIME RIB 107Z
 DAM: RED BMB CLASSY LADY 776C
 RED CINDER CLASSY 223A

BW	WW	BW	WW	YW	MILK	CE	MCE
98	637	3.6	44	75	25	-6	2

Deep ribbed, stout made. Dark red bull with a great hair coat and has an outcross pedigree.



**LOT
16B**

RED BMB HUNGARY 260H

2158690 | BMB 260H | FEBRUARY 14, 2020

RED RMJ REDMAN 1T
 SIRE: RED LAZY MC FORUM 223Y
 RED LAZY MC BESS 12S
 RED BASIN MAX 215G
 DAM: RED BMB MISTRESS 260Y
 RED BRYLOR DVSF MISTRESS 419L

BW	WW	BW	WW	YW	MILK	CE	MCE
88	600	-0.5	16	32	25	8	4

Moderate framed super calving ease cow bull with a great hair coat and lots of natural muscle expression. Bar N Ghost Pine and Cam Owens have maternal brothers in their herd. Maternal sibling to Lot 22B/BMB 260G.



**LOT
17B**

RED BMB HEX 224H

2184148 | BMB 224H | MARCH 2, 2020

RED SILVEIRAS MISSION NEXUS
 SIRE: RED MAC NEXUS 105F
 RED CROWFOOT BRNDINA 191X
 RED BMB EDGE 625B
 DAM: RED BMB CATERINA 224E
 RED BMB CATERINA 862C

BW	WW	BW	WW	YW	MILK	CE	MCE
94	636	3.7	48	95	23	-6	3

Long sided, growthy cow bull. Great herd bull prospect in the works here.



**LOT
18B**

RED BMB HOBBIT 263H

2157360 | BMB 263H | FEBRUARY 2, 2020

RED PIE SPECIALIST 430
 SIRE: RED COCKBURN ASSASSIN 624D
 RED COCKBURN CORA 254Z
 RED BASIN MAX 215G
 DAM: RED BMB CHERRY COLA 263Y
 RED BMB COLA 73U

BW	WW	BW	WW	YW	MILK	CE	MCE
98	686	3.6	46	79	30	-6	0

Another long sided smooth made Assassin bull with good muscle expression. Jerri & Garry Fletcher has a brother working in their herd. Maternal sibling to Lot 21B/BMB 215G.

TWO YR OLD RED ANGUS BULLS



**LOT
19B**

RED BLJ GIZMO 50G

2120141 | BLJ 50G | MARCH 19, 2019

RED CROWFOOT MOONSHINE 8081U
 SIRE: RED BMB MOONSHINE 776C
 RED TED TOP MARIAS 165R
 RED GET-A-LONG WANDER 905
 DAM: RED BLJ MISTY 50C
 RED BLJ MISS FIRE 25A

BW	WW	BW	WW	YW	MILK	CE	MCE
91	699	1.9	47	71	21	0	5

Weighing in at 1740 lbs on Jan 27/21. Deep red, smooth shouldered, easy fleshing bull with tons of middle. Here's another bull out of Red BLJ Misty 50C coming from Janessa's foundation cow family originating back to a female purchased from Thistle Ridge Ranch. Sired by one of our own herd sires Red BMB Moonshine 774C which goes back Red Crowfoot Moonshine 8081U and Red Brylor Toast 30T on the Granddam side. Maternal sibling to Lot #1B, BLJ 50H.



DAM: BLJ 50C

RED BMB GENTRY 762G

**LOT
20B**

2128701 | BMB 762G | MARCH 5, 2019

RED GET-A-LONG WANDER 905
 SIRE: RED BMB AMBLESTAR 47D
 RED BMB FANNY J 119W
 RED CROWFOOT MOONSHINE 8081U
 DAM: RED BMB BIEBIRD 762C
 RED CINDER BIEBIRD 18X

BW	WW	BW	WW	YW	MILK	CE	MCE
90	716	1.8	49	77	18	0	7

Weighing in at 1945 lbs on Jan 27/21. This bull is impressive. He is athletic, stout and is very growthy all in one great package. Dark cherry red and a great hair coat like his sire who is one of our own home raised bulls. His sires dam goes back to CYT Fanny 15P cow family which has produced a few producing females in our herd.



DAM: BMB 762C

TWO YR OLD RED ANGUS BULLS



**LOT
21B**

RED BMB FLYER 215G

2122261 | BMB 215G | FEBRUARY 5, 2019

RED PIE SPECIALIST 430
 SIRE: RED COCKBURN ASSASSIN 624D
 RED COCKBURN CORA 254Z
 RED BRYLOR SDL PASQUALE 213P
 DAM: RED BMB FANNY P 215X
 RED CYT FANNY 15P

BW	WW	BW	WW	YW	MILK	CE	MCE
90	596	0	33	62	25	4	9

A long sided Assassin son with great shape and muscle pattern. Tons of growth here. Assassin sons have been highly sought by purebred and commercial cattlemen. Paternal sibling to Lot 18B/BMB 263H. Weighing in at 1952 lbs on Jan 27/21.



**LOT
22B**

RED BMB MAGNUS 260G

2122263 | BMB 260G | FEBRUARY 13, 2019

RED TER-RON PARKER 34A
 SIRE: RED LAZY MC HOLLYWOOD 127C
 RED LAZY MC FIREFLY 36Z
 RED BASIN MAX 215G
 DAM: RED BMB MISTRESS 260Y
 RED BRYLOR DVSF MISTRESS 419L

BW	WW	BW	WW	YW	MILK	CE	MCE
90	663	1.6	33	54	23	3	1

Another growthy herd bull here. His quality hair coat, easy fleshing, big time capacity stands out here. Weighing in at 1968 lbs on Jan 27/21.



**LOT
23B**

RED BMB RYDER 365G

2122266 | BMB 365H | FEBRUARY 23, 2019

RED WPRA LEGACY A-314
 SIRE: RED LAZY MC TRADITION 111C
 RED LAZY MC FIREFLY 78R
 RED SIX MILE SAKIC 832S
 DAM: RED BMB CATERINA 365Z
 RED BMB CATERINA 49U

BW	WW	BW	WW	YW	MILK	CE	MCE
94	601	3	29	60	23	-2	3

Here's a moderate framed cow bull with oodles of length and muscle out of Lazy MC Tradition 111C. An AI bull we really like for his confirmation and performance. Weighing in at 1728 lbs on Jan 27/21.



**LOT
24B**

RED BMB DECOY 7373G

2129997 | BMB 737G | MARCH 14, 2019

RED HOWE TEMPT 87B
 SIRE: RED BMB DOLCE 50D
 RED BMB FLICKA 297Y
 RED CINDER ROAD TRIP 18Y
 DAM: RED BMB BABY 737B
 RED BMB BABY 237X

BW	WW	BW	WW	YW	MILK	CE	MCE
90	745	0.3	37	56	27	4	3

Take a look at this herd bull. Nice dark red hair coat. He is long, smooth, thick and deep bodied with a ton of natural muscle. Weighing in at 1990 lbs on Jan 27/21.

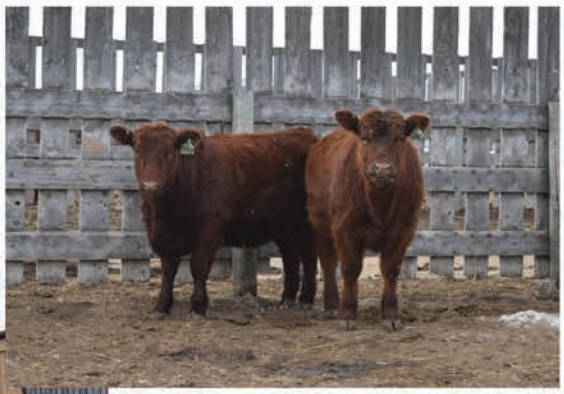
**LOT
25B**

SELECT GROUP OF OPEN RED ANGUS COMMERCIAL HEIFERS

We will be offering approximately 50 open Red Angus commercial heifers that will be sorted into smaller groups on sale day. These heifers are all sired by our herd bulls used in our program



Heifers like these sell



We would like to thank all of our sponsors past and present

CO-OP South Country Co-op Limited
12002 Range Road 60A
Cypress County, AB T1B 1E3

TOBY NEWTON
Livestock Specialist

Direct Line 403.528.6609
Ext. 5
Cell 403.580.0713
Fax 403.528.6632

www.southcountrycoop.ca tnewton@scoop.ca

TC
TABER CATTLE CLINIC

403-223-2000
office@tabercattleclinic.com
6303 55 St. Taber, AB

OLS Mineral - "Simply the Best"
Dealer: **Fleming Stock Farms**

Duncan Fleming
Granum, AB
Cell: 403-625-0427
Phone: 403-687-2288
Toll Free: 1-800-565-5288
flemingangus@xplomet.com



RME ROCKY MOUNTAIN EQUIPMENT

JACK BREWIN
Sales Consultant, AG Equipment
jbrewin@rockymtn.com

Highway 3 West & 864 Secondary
Taber, AB T1G 2E5
www.rockymtn.com

CASE CONSTRUCTION

Main Line 403 223 2333
Toll Free 855 763 1427
Mobile 403 894 9263
FAX 403 223 1515

Hugh Locke
Territory Manager
Certified Feed Industry Advisor

Masterfeeds INC.

6015 - 54 Ave., Taber, Alberta T1G 1X4
Phone: (403) 223-4444
Fax: (403) 223-1141
Cell: (403) 380-9808
E-mail: hlocke@masterfeeds.com
www.masterfeeds.com

ROBERTSON IMPLEMENTS

Ben Matthews
Parts Manager

T 403.223.4437 5614 - 64th Street
F 403.223.3411 Taber AB T1G 1Y8

ben.matthews@robertsonimplements.com
robertsonimplements.com

UFA

CORNY VANDASSELAAR
Customer Account Manager

403.328.5531
587.220.0894
UFA.com
Cornyn.vandasselaar@UFA.com

2905 2 Avenue N
Lethbridge, Alberta T1H 6M1

ICI
INDEPENDENT CROP INPUTS

Bruce Fletcher

Cell: 403-393-6497
Office: 403-223-1325
Email: bruce@icitaber.com

Box 4690
Taber, AB
T1G-2E1

EASY RAY ANGUS
Box 1279
RAYMOND, AB
T0K 2S0

