

EASY

15th Annual

ANGUS

BULL SALE

Raymond, AB

Wednesday, March 7, 2018

Perlich Brothers Auction Mart, Lethbridge, AB.

• 60+ Black Angus Yearling Bulls

(All Black Bulls have been i50K Zoetis Tested)

George Hofer – 403.892.0291
 easyrayangus@gmail.com

Easy Ray Bulls can be seen anytime at the Ranch,
 3 miles east of Raymond and 3 miles south.

Coffee is
 always
 on! Please
 phone for a
 catalogue.



PERFORMANCE BULLS LIKE 75E SELL

EPD BW+2.4 WW+72 YW+113 MILK+24 BW 91 WW 810
 JAN 5 WT 1355lbs



HEIFER BULLS LIKE 182D SELL!

EPD: BW+0.7 WW+53 YW+94 MILK+19 BW -84 ADJ. WW -668
 JAN 5 WT 1200lbs



BMB

BMB BREWIN ANGUS BULLS

Join us for
 lunch
 before the
 Sale!

BMB BREWIN ANGUS

Brent Brewin
 403-382-9164

- 12 Red Angus Yearling Bulls
- 60 Red Angus Open Heifers

RIRIE SIMMENTALS

Cody Ririe
 403-360-6456

- 14 Simmental Yearling Bulls

Guest Consignors

SHARPLES RANCH

Jeannie White
 403-315-4020

- 20 Top Quality Black Angus
 Open Heifers

HICKEN RANCHES

Brian Hicken
 403-308-8442

- 140 Commercial open
 Black Angus Heifers

Easy Ray

ANGUS



George Hofer

(403) 892-0291

easyrayangus@gmail.com

Hello, Fellow Cattlemen.

Oh my goodness, how time flies! 19 years ago we were calving our first purebred Aberdeen Angus heifers. We have learned a lot through the years and are still learning. Who would've thought, way back then, that we would be doing our own ultra-sound preg-testing!

I've seen a lot of cattle in my time and we really do have a lot of good cattle in our country. When we here at Easy Ray Angus make a decision to buy a new bull for our heifers we need to do our homework. That first calf has to come out really easy for her. After that, I think, if a cow can't have a 115 pound calf she probably isn't much of a cow. Just weigh some of your bigger calves and you'll know what I mean.

These mature cows need a performance bull to bring home a big steer calf in the fall and these performance bulls cost a little bit more money. With good management, these yearling and two year-olds can be trouble free.

We guarantee our bulls to perform, if there ever is a problem please feel free to call. We would also like to thank past and future customers, we are truly grateful for each and everyone of you.

It has truly been a pleasure to watch these individuals grow from calf to sale day. Performance was incredible with 7 months on momma's milk and 6 months on feed.

Come to the ranch to view the bulls and show up on sale day to evaluate them for yourself, we hope to see you there.

Sincerely,
George Hofer

SALE DAY PHONE: (403) 329-3101

AUCTIONEER

BOB PERLICH: (403) 382-7800

BRENT BREWIN: (403) 382-9164

CODY RIRIE: (403) 360-6456

SIGHT UNSEEN PURCHASING:

CALL ANYONE OF THE WONDERFUL PEOPLE

DARCY MOORHEAD (403) 635-0308

BILL PERLICH (403) 540-1884

KEN LIDBERG (403) 382-8189

BREEDER'S GAURANTEE

The bulls have been semen tested and soundness evaluated prior to the sale. Any bull that has not proven itself a breeder within 6 months after the date of sale, if in healthy condition, may be returned to the seller at the buyers expense. The seller reserves the priviledge of trying for a 6 month period to prove the animal a breeder. The seller, at his option, may either return the purchase price or replace the animal with another animal of equal quality in full settlement and satisfaction of ALL claims. All claims must be reported in writing by the buyer within 6 months and the animal returned must be free of disease and in good health.

TERMS AND CONDITIONS

ALL REGISTRATION PAPERS MUST BE IN ORDER BEFORE ANY MONEYS WILL BE RELEASED

TERMS: The terms of the sale are cash or cheque and all settlements must be made on sale date. The right of the property shall not pass until after the settlement is made. All settlements must be made with the clerks of the sale before any cattle will be released.

DISPUTES: In case of disputes, bidding will be reopened between parties involved. If no further bid is made, the buyer will be the person from whom the auctioneer accepted the last bid. The auctioneer's decision in such matters will be final.

PURCHASER'S RISK: Each animal becomes the risk of the purchasers as soon as sold. Animals will be cared for at the purchaser's risk for a reasonable length of time.

ANNOUNCEMENTS: Errors discovered in the catalogue will be corrected by the announcements from the auction stand at sale time and such corrections will take precedence over printed matter in the catalogue.

CETIFICATE OF REGISTRY: A certificate of Registry or Recordation, where applicable, duly transferred will be furnished to the buyer for each animal after settlement has been made.

ACCIDENTS: Although every precaution will be taken to protect the safety and comfort of the buyer, Perlich Bros. Auction Market LTD. assume no responsibility in this matter and disclaims any liability legal or otherwise in the event of an accident or loss of property.

MAIL BIDS: Mail or wire bids may be furnished in confidential form to: Perlich Bros. Auction Market LTD. Box 1057 Lethbridge, Alberta T1J 4A2

LIABILITY: Perlich Bros. Auction Market LTD is acting as an agent only in this sale and is not liable in any matter whatsoever for any representations made by the seller. The purchaser must look to the seller for fulfillment of all guarantees and representations made hereunder.

The Crew



Sam Hofer
(403) 892-0339



Leighton Hofer
(403) 892-1662



Reference Sires

Sire A

ALLENCROFT IMPACT 03 321C

DOB: 18/01/2015 REG: 1843356 IGV 321C

TC TOTAL 410

POSS TOTAL IMPACT 745

POSS BLACKCAP 5116

ALLENCROFT ILLINI 01 144J

ALLENCROFT BLACKCAP 01 292Y

ALLENCROFT BLACKCAP 08 182W

Male Calf AVG

BW: 87

WW: 677

YW: 1259

| BW | WW | YW | MILK | TM | CE | MARB | REA |
|------|-----|------|------|-----|------|-------|-------|
| +3.0 | +63 | +105 | +12 | +44 | +3.0 | +0.54 | +0.62 |

BW: 97

ADJ WW: 775

ADJ YW: 1372

Sire D

HF TIGER 161A

28/01/2013 1744196 HAMI 161A

HF KODIAK 5R

HF TIGER 5T

HF ECHO 84R

HF HEMI 151T

HF ECHO 178W

HF ECHO 97K

Male Calf AVG

BW: 88

WW: 733

YW: 1229

| BW | WW | YW | MILK | TM | CE | MARB | REA |
|------|-----|------|------|-----|------|-------|-------|
| +5.7 | +75 | +114 | +21 | +62 | -1.0 | +0.27 | +0.31 |

BW: 85

ADJ WW: 784

ADJ YW: 1282

Sire B

ALLENCROFT 11 IMPACT 07 3B

20/01/2014 1778387 VIG 3B

TC TOTAL 410

POSS TOTAL IMPACT 745

POSS BLACKCAP 5116

ALLENCROFT MARSHALL 04 154

ALLENCROFT BLACKCAP 03 204S

ALLENCROFT BLACKCAP 01 184M

Male Calf AVG

BW: 88

WW: 707

YW: 1156

| BW | WW | YW | MILK | TM | CE | MARB | REA |
|------|-----|-----|------|-----|------|-------|-------|
| +3.6 | +61 | +98 | +16 | +45 | -6.2 | +0.82 | +0.37 |

BW: 95

ADJ WW: 743

ADJ YW: 1192

Sire E

JF FINALIZE B28

19/01/2014 1883389 IMP 28B

S A V FINAL ANSWER 0035

MOHNEN FINALIZE 1011

MOHNEN JILT 910

SYDGEN DOC 9017

JF HYALITE Z34

OX BOW HYALITE 4108

Male Calf AVG

BW: 99

WW: 630

YW: 1052

| BW | WW | YW | MILK | TM | CE | MARB | REA |
|------|-----|-----|------|-----|------|-------|-------|
| +1.3 | +52 | +88 | +23 | +47 | -0.6 | +0.26 | +0.79 |

BW: N/A

ADJ WW: N/A

ADJ YW: N/A

Sire C

BORDER BUTTE FINAL ANSWER 111A

15/01/2013 1740281 BRDR 111A

SITZ TRAVELER 8180

S A V FINAL ANSWER 0035

S A V EMULOUS 8145

MYTTY IN FOCUS

BORDER BUTTE DANIELLE 99W

EBON HILL DANIELLE 35'07

Male Calf AVG

BW: 84

WW: 699

YW: 1225

| BW | WW | YW | MILK | TM | CE | MARB | REA |
|------|-----|-----|------|-----|-------|-------|-------|
| -0.4 | +52 | +93 | +23 | +52 | +10.0 | +0.51 | +0.20 |

BW: 89

ADJ WW: 803

ADJ YW: 1266

Sire F

EASY RAY ANSWER 140C

23/02/2015 1845978 EA 140C

S A V FINAL ANSWER 0035

BORDER BUTTE FINAL ANSWER 111A

BORDER BUTTE DANIELLE 99W

ALLENCROFT UPWARD 07 215X

EASY RAY ELBA 11Z

EASY RAY ELBA 33W

Male Calf AVG

BW: 78

WW: 683

YW: 1345

| BW | WW | YW | MILK | TM | CE | MARB | REA |
|------|-----|------|------|-----|-------|-------|-------|
| +0.8 | +75 | +131 | +29 | +67 | +10.0 | +0.57 | +0.22 |

BW: 82

ADJ WW: 781

ADJ YW: 1468

EA Yearlings AU

173D *Easy Ray* Impact 173D
 DOB: 21/12/2016 REG: 1971573 EA 173D

POSS TOTAL IMPACT 745
 ALLENCROFT IMPACT 03 321C
 ALLENCROFT BLACKCAP 01 292Y

BORDER BUTTE FINAL ANSWER
 EASY RAY ZARA 74C
 EASY RAY ZARA 33A

| BW | WW | YW | MILK | TM | CE | MARB | REA |
|------|-----|------|------|-----|------|------|-----|
| +3.2 | +62 | +106 | +18 | +50 | +1.0 | - | - |

Our first bull featured in the catalogue was a December calf born from a heifer, he's shown great growth that's sure to carry on to his offspring. He's a great looking bull that's built extremely well with a tremendous yearling weight of 1445 and an incredible EPD chart, don't miss this one. 365 day gain is 4.72lbs/day.

| |
|--------------|
| BW: 91 |
| ADJ WW: 690 |
| ADJ YW: 1445 |

178D *Easy Ray* Impact 178D
 DOB: 26/12/2016 REG: 1971577 EA 178D

POSS TOTAL IMPACT 745
 ALLENCROFT IMPACT 03 321C
 ALLENCROFT BLACKCAP 01 292Y

JPD BISMARCK 8X
 EASY RAY LUCY 65C
 EASY RAY LUCY 7R

| BW | WW | YW | MILK | TM | CE | MARB | REA |
|------|-----|-----|------|-----|------|-------|-------|
| +3.7 | +54 | +78 | +19 | +46 | -2.0 | +0.51 | +0.44 |

A cow bull that placed in the top 20% for marbling, his EPDs are moderate. 365d gain of 3.68lbs/day.

| |
|--------------|
| BW: 92 |
| ADJ WW: 652 |
| ADJ YW: 1240 |

174D *Easy Ray* Finalize 174D
 DOB: 22/12/2016 REG: 1971576 EA 174D

MOHNEN FINALIZE 1011
 JF FINALIZE B28
 JF HYALITE Z34

BORDER BUTTE FINAL ANSWER 111A
 EASY RAY ZARA 3C
 EASY RAY ZARA 124Z

| BW | WW | YW | MILK | TM | CE | MARB | REA |
|------|-----|-----|------|-----|-----|-------|-------|
| +2.8 | +53 | +91 | +23 | +50 | 0.0 | +0.38 | +0.53 |

Here's a bull out of our "Finalize" sire that'll be perfect to use on cows and bigger heifers. His EPDs foretell great growth and he's got a 1380 pound yearling weight. His high Milk and Total Maternal EPDs indicate that he'll be the perfect bull for raising good mothering cows. 365 day gain is 4.49lbs/day.

| |
|--------------|
| BW: 91 |
| ADJ WW: 662 |
| ADJ YW: 1380 |



A great looking bull from front to back, our highest weighing bull in the sale. His impressive weights, including his 1448 yearling weight, have made him Herb's favourite. A whooping +11.0 Calving Ease EPD.

179D *Easy Ray* Finalize 179D
 DOB: 24/12/2016 REG: 1971579 EA 179D

MOHNEN FINALIZE 1011
 JF FINALIZE B28
 JF HYALITE Z34

HF TIGER 161A
 EASY RAY COUNTESS 141B
 EASY RAY COUNTESS 32Z

| BW | WW | YW | MILK | TM | CE | MARB | REA |
|------|-----|------|------|-----|------|-------|-------|
| +4.8 | +63 | +107 | +18 | +50 | -5.0 | +0.24 | +0.66 |

Another outstanding bull from our "Finalize" sire that just stood out all year. His weights were impressive and didn't disappoint from birth to yearling. His Dam comes from a long line of well tempered cows that have high YW EPD's, they have just done so great for generations in our herd. 365 day gain of 4.66lbs/day.

| |
|--------------|
| BW: 92 |
| ADJ WW: 681 |
| ADJ YW: 1426 |

181D *Easy Ray* Mr Ridge 181D
 DOB: 24/12/2016 REG: 1971579 EA 179D

BORDER BUTTE FINAL ANSWER 111A
 EASY RAY ANSWER 140C
 EASY RAY ELBA 11Z

BENCHMARK RIBEYE 782
 EASY RAY ZARA 71X
 EASY RAY ZARA 49T

| BW | WW | YW | MILK | TM | CE | MARB | REA |
|------|-----|------|------|-----|-----|-------|-------|
| -0.1 | +52 | +101 | +32 | +61 | +11 | +0.59 | +0.29 |

We're so excited to announce our new line of "Mr Ridge" bulls that are out of our home-raised sire "Easy Ray Answer 140C" He's a performance heifer bull and he's in the top 1% for Total Maternal and Milk. Calves coming from this bull will be nice and small but they'll pack on the pounds 5. quickly. 365 day gain of 4.42lbs/day.

| |
|--------------|
| BW: 83 |
| ADJ WW: 742 |
| ADJ YW: 1448 |

EA Yearlings AU



He's out of our "Final Answer" sire that we bought from Border Butte Angus. His Sire and Dam were just the perfect match, with his Sire showing great growth and Dam showing great Calving Ease.

182D *Easy Ray* Answer 182D
 DOB:26/12/2016 REG:1971581 EA 182D

S A V FINAL ANSWER 0035
 BORDER BUTTE FINAL ANSWER 111A
 BORDER BUTTE DANIELLE 99W

TED FINAL ANSWER 2W
 EASY RAY LASS 9A
 EASY RAY LASS 69W

| BW | WW | YW | MILK | TM | CE | MARB | REA |
|------|-----|-----|------|-----|------|-------|-------|
| +1.0 | +49 | +85 | +19 | +46 | +8.0 | +0.30 | +0.11 |

He's an amazing looking bull with great build and such a nice thick look, he'll be perfect on bigger heifers and in your cow herd. His Dam is a beautiful looking cow that has Calving Ease that goes back a long way. He's also in the top 4% for Scrotal Circ. 365 day gain is 3.58lbs/day.

| |
|--------------|
| BW: 84 |
| ADJ WW: 668 |
| ADJ YW: 1240 |

184D *Easy Ray* Mr Ridge 184D
 DOB: 27/12/2016 REG:1971584 EA 184D

BORDER BUTTE FINAL ANSWER 111A
 EASY RAY ANSWER 140C
 EASY RAY ELBA 11Z

LCC NEW STANDARD
 EASY RAY BEAUTY 4T
 EASY RAY BEAUTY 18R

| BW | WW | YW | MILK | TM | CE | MARB | REA |
|------|-----|------|------|-----|------|-------|-------|
| +0.8 | +61 | +110 | +30 | +60 | +8.5 | +0.51 | +0.35 |

Twin. Showing the same numbers as his full brother "183D" he's a bull that's not to be overlooked. You can be confident when adding either of these brothers to your heifer herd. The Calving Ease from this bull is a trait coming from both his Sire and Dam and he's got the same outstanding Zoetis scores as his brother. 365 day gain is 3.96lbs/day.

| |
|--------------|
| BW: 78 |
| ADJ WW: 651 |
| ADJ YW: 1284 |

183D *Easy Ray* Mr Ridge 183D
 DOB:27/12/2016 REG:1971579 EA 179D

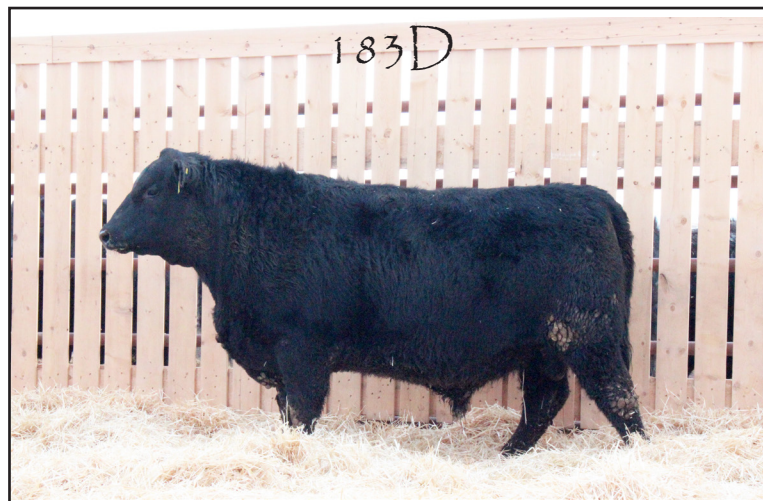
BORDER BUTTE FINAL ANSWER 111A
 EASY RAY ANSWER 140C
 EASY RAY ELBA 11Z

LCC NEW STANDARD
 EASY RAY BEAUTY 4T
 EASY RAY BEAUTY 18R

| BW | WW | YW | MILK | TM | CE | MARB | REA |
|------|-----|------|------|-----|------|-------|-------|
| +0.8 | +61 | +110 | +30 | +60 | +8.5 | +0.51 | +0.35 |

Twin. A full brother to 184D that's part of our "Mr Ridge" line of bulls. This whole group show such great numbers and have been blowing us away all year. Zoetis has placed him in the top 1% for Milk and Total Maternal, 7% for Weaning weight and 4% for Yearling weight, a bull that's truly got it all! 365 day gain is 4.04lbs/day.

| |
|--------------|
| BW: 72 |
| ADJ WW: 657 |
| ADJ YW: 1303 |



Brother to our High Seller that went to Harvey Freimark and the Dam has 6. another son at Jamuran Cattle.

EA Yearlings AU

187D *EASY RAY* Tiger 187D
 DOB: 28/12/2016 REG: 1971587 EA 187D

HF TIGER 5T
 HF TIGER 161A
 HF ECHO 178W

ALLENCROFT UPWARD 07 215X
 EASY RAY COUNTESS 58A
 EASY RAY COUNTESS 33W

| BW | WW | YW | MILK | TM | CE | MARB | REA |
|------|-----|------|------|-----|------|-------|-------|
| +3.6 | +60 | +100 | +15 | +46 | +2.0 | +0.25 | +0.37 |

He's the first bull in our catalogue from our "Tiger" sire and he brings to the table all the traits we eyed when selecting his sire at the 2015 Hamilton sale. He's got a +100 yearling weight EPD and ranked in the top 5% for weaning and 10% for yearling weights. His sire's male calf average is 373 pounds. 365 day gain is 3.69lbs/day.

| |
|--------------|
| BW: 90 |
| ADJ WW: 662 |
| ADJ YW: 1253 |



Here's a smooth, big framed herd bull prospect that's not only sporting great growth but he's also got a +46 total maternal score that is absolutely essential in every successful cow herd.

1E *EASY RAY* Impact 1E
 DOB: 01/01/2017 REG: 1971591 EA 1E

POSS TOTAL IMPACT 745
 ALLENCROFT IMPACT 03 321C
 ALLENCROFT BLACKCAP 01 292Y

ALLENCROFT UPWARD 07 215X
 EASY RAY LUCY 150C
 EASY RAY LUCY 41Z

| BW | WW | YW | MILK | TM | CE | MARB | REA |
|------|-----|-----|------|-----|------|-------|------|
| +3.7 | +57 | +98 | +118 | +45 | +3.0 | +0.42 | 0.58 |

Here's a bull I would recommend for cows, he was born out of a first calf heifer and came out weighing 84 pounds. He's a performance bull that packed on weight easily throughout his first year, coming in just shy of 1300 pounds. Good carcass EPDs, and also a high total maternal, put this guy into the herd sire category. 365 day gain is 4.05lbs/day.

| |
|--------------|
| BW: 84 |
| ADJ WW: 645 |
| ADJ YW: 1292 |

3E *EASY RAY* Earnan 3E
 DOB: 01/01/2017 REG: 1971596 EA 3E

CONNELLY EARNAN 076E
 BORDER BUTTE EARNAN 29C
 BORDER BUTTE DELLA 29W

TED FINAL ANSWER 2W
 EASY RAY BLUE LADY 73B
 EASY RAY BLUE LADY 44X

| BW | WW | YW | MILK | TM | CE | MARB | REA |
|------|-----|------|------|-----|------|-------|-------|
| +1.6 | +60 | +106 | +23 | +53 | +6.0 | +0.35 | +0.21 |

Twin. He's a full brother to "2E", out of our "Earnan" lineage, he brings with him an identical set of EPDs that boast calving ease and that high +106 yearling weight that's so important in this business. A heifer bull that won't disappoint, and he's got the bloodlines to prove it.

| |
|-------------|
| BW: 82 |
| ADJ WW: 656 |
| ADJ YW: |

2E *EASY RAY* Earnan 2E
 DOB: 01/01/2017 REG: 1971594 EA 2E

CONNELLY EARNAN 076E
 BORDER BUTTE EARNAN 29C
 BORDER BUTTE DELLA 29W

TED FINAL ANSWER 2W
 EASY RAY BLUE LADY 73B
 EASY RAY BLUE LADY 44X

| BW | WW | YW | MILK | TM | CE | MARB | REA |
|------|-----|------|------|-----|------|-------|-------|
| +1.6 | +60 | +106 | +23 | +53 | +6.0 | +0.35 | +0.21 |

Twin. He's a sleek black bull that came in at 72 pounds and grew all the way up to 1301 in just a year, he's the ideal heifer bull for any outfit that's looking for small calves with substantial growth. His +106 yearling weight EPD in addition to high maternal and calving ease are sure to catch your eye. 365 day gain is 4.14lbs/day.

| |
|--------------|
| BW: 72 |
| ADJ WW: 639 |
| ADJ YW: 1301 |

11E *EASY RAY* Answer 11E
 DOB: 03/01/2017 REG: 1971602 EA 11E

S A V FINAL ANSWER 0035
 BORDER BUTTE FINAL ANSWER 111A
 BORDER BUTTE DANIELLE 99W

EASY RAY IN FOCUS 3U
 EASY RAY BLUE LADY 84X
 EASY RAY BLUE LADY 59U

| BW | WW | YW | MILK | TM | CE | MARB | REA |
|------|-----|-----|------|-----|------|-------|-------|
| +2.4 | +57 | +88 | +24 | +54 | +6.0 | +0.40 | +0.21 |

A deep bodied cow bull that's got a +24 milk and +54 total maternal, a bull I'm confident to recommend to anyone with intentions of adding on to their cow herd. His Grand Dam, out of our "Blue Lady" line, is an Elite cow, and he's got a brother at Murray Ranches and at Elk Point. This bull was also rated in the top 10% for weaning weights. 365 day gain is 3.60lbs/day.

| |
|--------------|
| BW: 87 |
| ADJ WW: 703 |
| ADJ YW: 1279 |

EA Yearlings AU



An eye-pleaser that's got a great EPD profile to go with it, he's been ranked in the top 16% for feed efficiency traits.

20E

EASY RAY Earnan 20E

DOB: 04/01/2017 REG: 1971605 EA 20E

CONNELY EARNAN 076E
BORDER BUTTE EARNAN 29C
BORDER BUTTE DELLA 29W

FF PLATINUM Z126
EASY RAY BARDELLA 81B
EASY RAY BARDELLA 49Z

| BW | WW | YW | MILK | TM | CE | MARB | REA |
|------|-----|------|------|-----|------|-------|-------|
| +2.7 | +55 | +101 | +21 | +49 | +1.0 | +0.40 | +0.22 |

365 day gain is 4.28lbs/day.

| |
|--------------|
| BW: 84 |
| ADJ WW: 633 |
| ADJ YW: 1333 |

23E

EASY RAY Tiger 23E

DOB: 04/01/2017 REG: 1971611 EA 23E

HF TIGER 5T
HF TIGER 161A
HF ECHO 178W

S A R SAMSON 243S
EASY RAY COUNTESS 33W
EASY RAY COUNTESS 69P

| BW | WW | YW | MILK | TM | CE | MARB | REA |
|------|-----|------|------|-----|------|-------|-------|
| +4.6 | +58 | +102 | +18 | +47 | -1.0 | +0.30 | +0.26 |

He weaned just shy of 700 lbs and is a recommended cow bull. His dam is out of our "Countess" line that pass on beautifully their mothering bloodlines with high total maternal to each of their offspring, this guy showing an impressive +47. His grand-dam is an Elite cow. The Zoetis scores also ranked great feed efficiency in this individual. 365 day gain is 4.25lbs/day.

| |
|--------------|
| BW: 96 |
| ADJ WW: 696 |
| ADJ YW: 1376 |

21E

EASY RAY Tiger 21E

DOB: 04/01/2017 REG: 1971607 EA 21E

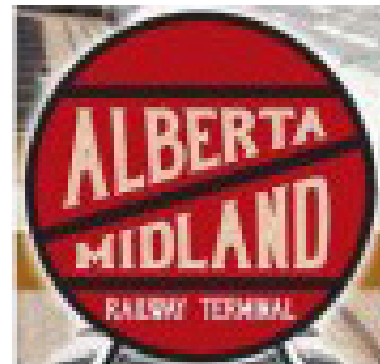
HF TIGER 5T
HF TIGER 161A
HF ECHO 178W

BENCHMARK PREMIUM BEEF 9139
EASY RAY ZARA 75A
EASY RAY ZARA 49T

| BW | WW | YW | MILK | TM | CE | MARB | REA |
|------|-----|------|------|-----|------|-------|-------|
| +3.6 | +64 | +107 | +13 | +46 | +2.0 | +0.38 | +0.29 |

A full-bodied, straight black, pure bred black angus bull that's just pleasing to the eye, he's well rounded and has a great looking EPD profile. He's been ranked in the top 4% for weaning weight, a trait shown in his own 711 weights, and also 6% for yearling weights. His dam also has a son at Buffalo Jump. 365 day gain is 4.05lbs/day.

| |
|--------------|
| BW: 93 |
| ADJ WW: 711 |
| ADJ YW: 1359 |



DARCY HEGGIE
(4903) 308-6924

EA Yearlings

32E

Easy Ray Finalize 32E

DOB: 06/01/2017 REG: 1971615 EA 32E

MOHNEN FINALIZE 1011

JF FINALIZE B28
JF HYALITE Z34

HF TIGER 161A
EASY RAY LUCY 140B
EASY RAY LUCY 37Z

| BW | WW | YW | MILK | TM | CE | MARB | REA |
|------|-----|-----|------|-----|-----|------|-----|
| +4.0 | +60 | +92 | +19 | +47 | 0.0 | - | - |

365 day gain is 3.64lbs/day. Here's a bull with moderate EPDs and a moderate frame.

| |
|--------------|
| BW: 81 |
| ADJ WW: 631 |
| ADJ YW: 1214 |



33E

Easy Ray Earnan 33E

DOB: 06/01/2017 REG: 1971619 EA 33E

CONNEALY EARNAN 076E

BORDER BUTTE EARNAN 29C
BORDER BUTTE DELLA 29W

BENCHMARK EFFICIENCY 0102
EASY RAY LUCY 5B
EASY RAY LUCY 41Z

| BW | WW | YW | MILK | TM | CE | MARB | REA |
|------|-----|------|------|-----|------|-------|-------|
| +4.9 | +71 | +111 | +25 | +61 | -2.0 | +0.43 | +0.44 |

A powerful cow bull that grew 3.75 lbs a day, and boasts a WW ratio of 111. He's got an EPD profile to be proud of and such impressive Zoetis scores, he's in the top 1% for weaning weight and maternal!

| |
|--------------|
| BW: 95 |
| ADJ WW: 751 |
| ADJ YW: 1352 |



A great looking individual from front to back, this "Earnan" bull is meant to be a herd sire. He's in the top 3% for yearling weight traits and his EPDs are amazing, especially the +119 YW and +61 TM.

36E

Easy Ray Earnan 36E

DOB: 06/01/2017 REG: 1971617 EA 36E

CONNEALY EARNAN 076E

BORDER BUTTE EARNAN 29C
BORDER BUTTE DELLA 29W

FF PLATINUM Z126
EASY RAY ELBA 122B
EASY RAY ELBA 73Y

| BW | WW | YW | MILK | TM | CE | MARB | REA |
|------|-----|-----|------|-----|------|-------|-------|
| +1.2 | +52 | +90 | +24 | +51 | +7.0 | +0.48 | +0.22 |

Another great "Earnan" progeny that's recommended for heifer use as is shown in his +7.0 calving ease and +1.2 birth weight EPDs. He weaned over 700 pounds and had a 1400 lbs yearling weight, tremendous performance on this bull, use him on your cows in the future. 365 day gain of 4.34lbs/day.

| |
|--------------|
| BW: 80 |
| ADJ WW: 705 |
| ADJ YW: 1400 |

EA Yearlings

37E

Easy Ray Earnan 37E

DOB: 07/01/2017 REG: 1971623 EA 37E

CONNEALY EARNAN 076E
 BORDER BUTTE EARNAN 29C
 BORDER BUTTE DELLA 29W

BENCHMARK CATALYST 135'11
 EASY RAY LASS 45B
 EASY RAY LASS 59Z

| BW | WW | YW | MILK | TM | CE | MARB | REA |
|------|-----|------|------|-----|-------|-------|-------|
| -2.8 | +51 | +104 | +22 | +50 | +14.0 | +0.57 | +0.22 |

Another "Earnan" bull that's got the best calving ease in our sale this year. His calves won't only be born small and easy but they'll be growing fast and filled with note-worthy traits. He's ranked in the top 1% for birth weight, calving ease, and maternal calving ease. After using him a year he'll be great to slide in wit the cows and will definitely be worth adding to your herd. 365 day gain of 4.62lbs/day.

| |
|--------------|
| BW: 65 |
| ADJ WW: 684 |
| ADJ YW: 1423 |



-2.8 birth weight and good, high marbling are just some of the highlights of this heifer bull prospect.

38E

Easy Ray Earnan 38E

DOB: 07/01/2017 REG: 1971624 EA 38E

CONNEALY EARNAN 076E
 BORDER BUTTE EARNAN 29C
 BORDER BUTTE DELLA 29W

CONNEALY EARNAN 076E
 BORDER BUTTE EARNAN 29C
 BORDER BUTTE DELLA 29W

| BW | WW | YW | MILK | TM | CE | MARB | REA |
|------|-----|-----|------|-----|------|-------|-------|
| +1.1 | +55 | +94 | +20 | +48 | +6.0 | +0.37 | +0.33 |

Yet another "Earnan" offspring that's got a nice calving ease EPD and rated well for feed efficiency by placing in the top 18%. He's a heifer bull for sure, don't let this guy slip by. 365d gain 4.02lbs/day.

| |
|--------------|
| BW: 80 |
| ADJ WW: 642 |
| ADJ YW: 1284 |

41E

Easy Ray Answer 41E

DOB: 09/01/2017 REG: CM414382 EA 41E

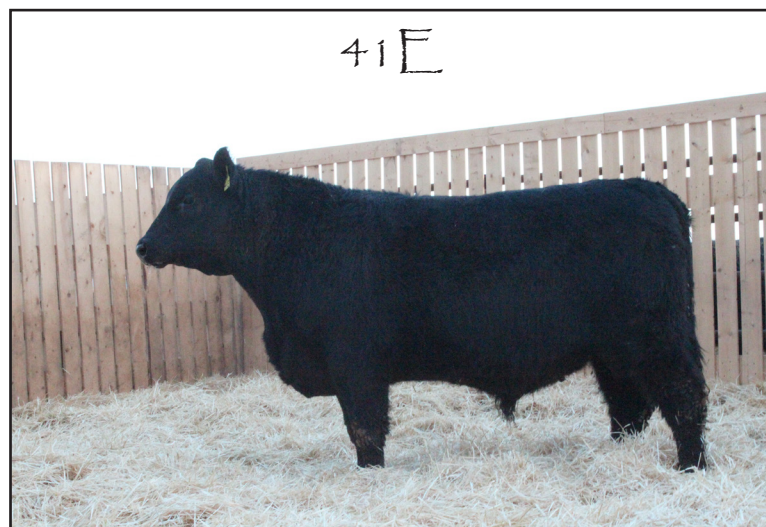
S A V FINAL ANSWER 0035
 BORDER BUTTE FINAL ANSWER 111A
 BORDER BUTTE DANIELLE 99W

TED FINAL ANSWER 2W
 EASY RAY PAULA 88A
 EASY RAY PAULA 40U

| BW | WW | YW | MILK | TM | CE | MARB | REA |
|----|----|----|------|----|----|------|-----|
| - | - | - | - | - | - | - | - |

205D Index 111. A beautiful bull with nice depth and filled with growth. His 365 day gain is 3.71lbs a day, a meat packer. Recommended for use on cows.

| |
|--------------|
| BW: 104 |
| ADJ WW: 753 |
| ADJ YW: 1347 |



An "Answer" son that's got great depth and will perform very well with any cow herd.

40E

Easy Ray Tiger 40E

DOB: 08/01/2017 REG: 1971625 EA 40E

HF TIGER 5T
 HF TIGER 161A
 HF ECHO 178W

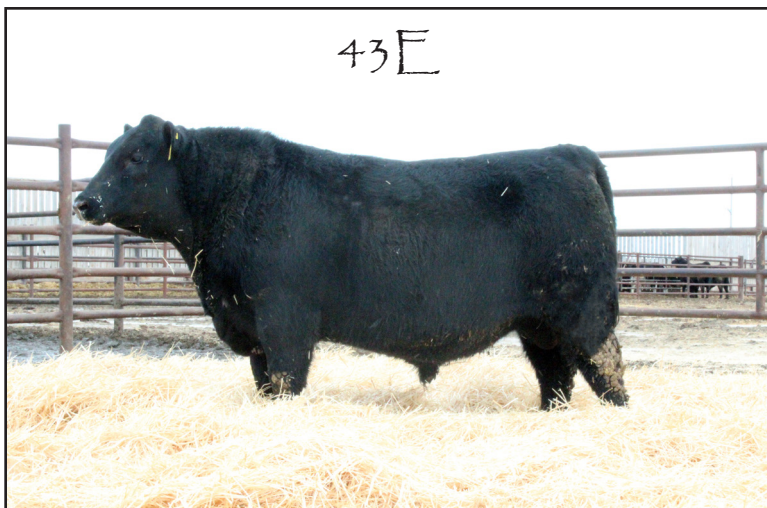
EASY RAY IN FOCUS 3U
 EASY RAY FREDA 51Z
 EASY RAY FREDA 77P

| BW | WW | YW | MILK | TM | CE | MARB | REA |
|------|-----|-----|------|-----|------|-------|-------|
| +3.1 | +62 | +95 | +18 | +48 | +3.0 | +0.28 | +0.38 |

Here's a cow bull that's loaded with potential, he's got great EPDs and is out of our "Tiger" sire. With a +95 yearling weight EPD and growing at a rate of 3.39 lbs a day he is showing great herd sire potential.

| |
|--------------|
| BW: 85 |
| ADJ WW: 669 |
| ADJ YW: 1212 |

EA Yearlings



43E

43E

Easy Ray Earnan 43E

DOB: 09/01/2017 REG: 1971628 EA 43E

CONNEALY EARNAN 076E
BORDER BUTTE EARNAN 29C
BORDER BUTTE DELLA 29W

BENCHMARK CATALYST 135'11
EASY RAY ELBA 3B
EASY RAY ELBA 46Z

| BW | WW | YW | MILK | TM | CE | MARB | REA |
|------|-----|------|------|-----|------|-------|-------|
| +1.8 | +61 | +109 | +25 | +56 | +6.0 | +0.59 | +0.29 |

He's a great looking herd bull with a nice long spine and a well rounded frame. Massive yearling weight EPD that'll pay off well. 365d gain 4.67lbs/day. Retaining Half Interest.

| |
|--------------|
| BW: 85 |
| ADJ WW: 714 |
| ADJ YW: 1461 |



44E

44E

Easy Ray Tiger 44E

DOB: 09/01/2017 REG: 1971630 EA 44E

HF TIGER 5T
HF TIGER 161A
HF ECHO 178W

WESTERN DESIGN 517
EASY RAY COUNTESS 33T
EASY RAY COUNTESS 14R

| BW | WW | YW | MILK | TM | CE | MARB | REA |
|------|-----|-----|------|-----|------|-------|-------|
| +4.4 | +57 | +94 | +24 | +56 | -3.0 | +0.30 | +0.44 |

His dam is an Elite Premiere dam. He had a 205d Index of 115, a cow bull. Just give his weaning weight a good look. 365d gain 3.98lbs/day.

| |
|--------------|
| BW: 97 |
| ADJ WW: 774 |
| ADJ YW: 1412 |



46E

46E

Easy Ray Tiger 46E

DOB: 09/01/2017 REG: 1971630 EA 46E

HF TIGER 5T
HF TIGER 161A
HF ECHO 178W

THE MAGICIAN OF ALCAN 017
EASY RAY LASS 60N
EASY RAY ELLA EX 14L

| BW | WW | YW | MILK | TM | CE | MARB | REA |
|----|----|----|------|----|----|------|-----|
| - | - | - | - | - | - | - | - |

His EPDs are pending.

| |
|-----------|
| BW: 87 |
| ADJ WW: - |
| ADJ YW: - |

EA Yearlings AU

47E

Easy Ray Earnan 47E

DOB: 09/01/2017 REG: 1971630 EA 47E

CONNEALY EARNAN 076E
BORDER BUTTE EARNAN 29C
BORDER BUTTE DELLA 29W

FF PLATINUM Z126
EASY RAY LUCY 89B
EASY RAY LUCY 66Y

| BW | WW | YW | MILK | TM | CE | MARB | REA |
|------|-----|-----|------|-----|------|-------|-------|
| +1.5 | +59 | +97 | +24 | +55 | +5.0 | +0.35 | +0.23 |

Here's a heifer bull that is sure to go out and get er' done, he's showing a nice EPD profile that's loaded with high milk and maternal, useful traits for any ranchers cow herd. And, most importantly, he's got a +97 yearling weight EPD. His 365 day gain is 3.87 pounds a day and he's got a 205D index of 110.

| |
|--------------|
| BW: 81 |
| ADJ WW: 729 |
| ADJ YW: 1349 |



Strong and full of depth, this guy is meant for heifers. His 365 day gain is 3.87 pounds a day and he's got a 205D index of 110.

49E

Easy Ray Impact 49E

DOB: 10/01/2017 REG: 1971634 EA 49E

POSS TOTAL IMPACT 745
ALLEN CROFT II IMPACT 07 3B
ALLEN CROFT BLACKCAP 03 204S

TED FINAL ANSWER 2W
EASY RAY LASS 47A
EASY RAY LASS 60N

| BW | WW | YW | MILK | TM | CE | MARB | REA |
|------|-----|-----|------|-----|------|-------|-------|
| +3.0 | +47 | +82 | +19 | +43 | -1.0 | +0.43 | +0.35 |

He's a big bull that's out of a cow who's mom just delivered her 14th calf at Easy Ray Angus this year. These "Impact"s are new genetics and they're a great looking set of bulls. His 365 day gain was 4.11lbs/day, genetics you'll want in your own herd.

| |
|--------------|
| BW: 93 |
| ADJ WW: 685 |
| ADJ YW: 1343 |



He packed on the pounds all the way up to a yearling weight, an impressive bull all around.

50E

Easy Ray Earnan 50E

DOB: 10/01/2017 REG: 19716342 EA 50E

CONNEALY EARNAN 076E
BORDER BUTTE EARNAN 29C
BORDER BUTTE DELLA 29W

FF PLATINUM Z126
EASY RAY ZARA 95B
EASY RAY ZARA 20Y

| BW | WW | YW | MILK | TM | CE | MARB | REA |
|------|-----|------|------|-----|------|------|-----|
| +1.9 | +60 | +104 | +21 | +51 | +4.0 | - | - |

A cow bull that can also be used on bigger heifers. He's got an EPD profile that just reads so well, with all his numbers exactly where you want them to be. He's got great genetics, his Grand Dam is at Elite/Premiere cow and also has 3 Grand calves. 365 day gain came in at 4.10lbs/day, noteworthy.

| |
|--------------|
| BW: 85 |
| ADJ WW: 681 |
| ADJ YW: 1337 |

60E

Easy Ray Impact 60E

DOB: 11/01/2017 REG: 19716346 EA 60E

POSS TOTAL IMPACT 745
ALLEN CROFT IMPACT 03 321C
ALLEN CROFT BLACKCAP 01 292Y

HF TIGER 161A
EASY RAY LASS 51C
EASY RAY LASS 47Z

| BW | WW | YW | MILK | TM | CE | MARB | REA |
|------|-----|-----|------|-----|------|------|-----|
| +3.5 | +60 | +98 | +11 | +40 | +3.0 | - | - |

Zoetis scored this guy high on weaning weight, yearling weight, good feed efficiency and in the top 7% for feed efficiency, definitely something to dwell upon when selecting a good sire. He's also gained impressively as well, his 365 day gain came in at 3.80lbs/day.

| |
|--------------|
| BW: 78 |
| ADJ WW: 640 |
| ADJ YW: 1248 |

EA Yearlings

63E

Easy Ray Impact 63E

DOB: 12/01/2017 REG: 1971643 EA 63E

POSS TOTAL IMPACT 745
ALLENCROFT IMPACT 03 321C
ALLENCROFT BLACKCAP 01 292Y

JPR BISMARCK 8X
EASY RAY BLUE LADY 77C
EASY RAY BLUE LADY 84X

| BW | WW | YW | MILK | TM | CE | MARB | REA |
|------|-----|-----|------|-----|------|-------|-------|
| +2.1 | +55 | +88 | +20 | +47 | +6.0 | +0.49 | +0.45 |

A carcass bull that's came in at 75 lbs at birth and weighed just shy of 700 at weaning, growth that's worth looking at twice. 365 day gain is 3.74lbs/day.

| |
|--------------|
| BW: 75 |
| ADJ WW: 689 |
| ADJ YW: 1287 |



64E

Easy Ray Tiger 64E

DOB: 12/01/2017 REG: 1971642 EA 64E

POSS TOTAL IMPACT 745
ALLENCROFT IMPACT 03 321C
ALLENCROFT BLACKCAP 01 292Y

BENCHMARK CATALYST 135'11
EASY RAY BUELAH 92C
EASY RAY BUELAH 42T

| BW | WW | YW | MILK | TM | CE | MARB | REA |
|------|-----|------|------|-----|------|-------|-------|
| +3.6 | +55 | +104 | +18 | +45 | +3.0 | +0.59 | +0.48 |

Performance, lots of performance on this guy. He'd definitely makes a good herd bull and I can't say enough good things about this bull. He needs more than a glance, just check out those EPDs! +104 yearling weight! Excellent! 365 day gain of 4.78lbs/day, our biggest gain in the whole lot. 365 index 124.

| |
|--------------|
| BW: 83 |
| ADJ WW: 708 |
| ADJ YW: 1474 |

73E

Easy Ray Tiger 73E

DOB: 14/01/2017 REG: 1971656 EA 73E

HF TIGER 5T
HF TIGER 161A
HF ECHO 178W

WILLABAR FOURTRAX 182L
EASY RAY BLUE LADY 45S
EASY RAY LASS 60N

| BW | WW | YW | MILK | TM | CE | MARB | REA |
|------|-----|-----|------|-----|------|-------|-------|
| +4.8 | +57 | +99 | +18 | +47 | -2.0 | +0.24 | +0.22 |

He's a cow bull that has moderate EPDs, he's done well for himself and there's nothing to complain about with this guy. 365d gain is 3.88lbs/day.

| |
|--------------|
| BW: 96 |
| ADJ WW: 686 |
| ADJ YW: 1307 |



70E

Easy Ray Earnan 70E

DOB: 13/01/2017 REG: 1971648 EA 70E

CONNEALY EARNAN 076E
BORDER BUTTE EARNAN 29C
BORDER BUTTE DELLA 29W

ALLENCROFT UPWARD 07 215X
EASY RAY LUCY 77B
EASY RAY LUCY 58U

| BW | WW | YW | MILK | TM | CE | MARB | REA |
|------|-----|------|------|-----|-------|-------|-------|
| -0.6 | +51 | +105 | +21 | +47 | +10.0 | +0.32 | +0.29 |

A super calving ease individual! He's got +10.0 calving ease and a +105 yearling weight, superb growth in this guy as well! He's in the top 7% for calving ease and yearling weight as well. 365 day index is 122, and his daily gain is 4.69lbs/day. Don't miss this guy.

| |
|--------------|
| BW: 78 |
| ADJ WW: 652 |
| ADJ YW: 1402 |

EA Yearlings

75E

Easy Ray Earnan 75E

DOB: 14/01/2017 REG: 1971652 EA 75E

CONNEALY EARNAN 076E
BORDER BUTTE EARNAN 29C
BORDER BUTTE DELLA 29W

BENCHMARK CATALYST 135'11
EASY RAY CATALYST 99B
EASY RAY LUCY 31Z

| BW | WW | YW | MILK | TM | CE | MARB | REA |
|------|-----|------|------|-----|------|-------|-------|
| +3.3 | +68 | +116 | +24 | +60 | +2.0 | +0.52 | +0.24 |

His high feed efficiency and a yearling weight that placed him as on of our heaviest bulls of the year are all traits that landed him the pick when selecting a bull for our Canadian Cattlemen ad. His 365 day gain is 4.12 lbs/day, our heaviest calf at weaning. 205D Index 122

| |
|--------------|
| BW: 91 |
| ADJ WW: 810 |
| ADJ YW: 1454 |



Retaining half interest.

79E

Easy Ray Earnan 79E

DOB: 15/01/2017 REG: 1971657 EA 79E

CONNEALY EARNAN 076E
BORDER BUTTE EARNAN 29C
BORDER BUTTE DELLA 29W

BENCHMARK PREMIUM BEEF 9139
EASY RAY LUCY 91B
EASY RAY LUCY 33U

| BW | WW | YW | MILK | TM | CE | MARB | REA |
|------|-----|------|------|-----|------|-------|-------|
| -0.1 | +58 | +103 | +22 | +51 | +9.0 | +0.57 | +0.19 |

An "Earnan" super calving ease son with great EPDs across the board. He is literally all you want for a great heifer bull, and his calves won't stay small. His EPDs foretell great growth. He's close to the top for feed efficiency. 365d gain is 3.89lbs/day.

| |
|--------------|
| BW: 75 |
| ADJ WW: 688 |
| ADJ YW: 1310 |

83E

Easy Ray Impact 83E

DOB: 16/01/2017 REG: 1971660 EA 83E

POSS TOTAL IMPACT 745
ALLEN CROFT IMPACT 03 321C
ALLEN CROFT BLACKCAP 01 292Y

ALLEN CROFT UPWARD 07 215X
EASY RAY LUCY 68C
EASY RAY LUCY 27W

| BW | WW | YW | MILK | TM | CE | MARB | REA |
|------|-----|------|------|-----|------|-------|-------|
| +3.9 | +60 | +104 | +18 | +47 | +3.0 | +0.46 | +0.48 |

His gain of 4.10lbs/day coupled with a +104 yearling weight EPD makes this bull a herd sire prospect. He's in the top 2% for tenderness and has close to a 1400lb yearling weight. A cow bull that's got some great EPDs, and his grand dam is an Elite cow.

| |
|--------------|
| BW: 82 |
| ADJ WW: 695 |
| ADJ YW: 1352 |

81E

Easy Ray Earnan 81E

DOB: 15/01/2017 EA 81E

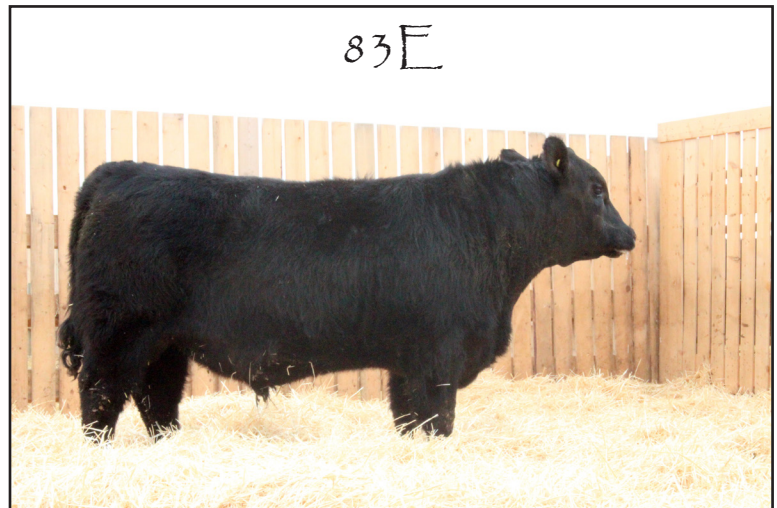
CONNEALY EARNAN 076E
BORDER BUTTE EARNAN 29C
BORDER BUTTE DELLA 29W

BENCHMARK PREMIUM BEEF 9139
EASY RAY LUCY 91B
EASY RAY LUCY 33U

| BW | WW | YW | MILK | TM | CE | MARB | REA |
|----|----|----|------|----|----|------|-----|
| | | | | | | | |

Registration and EPDs pending.

| |
|-----------|
| BW: 87 |
| ADJ WW: - |
| ADJ YW: - |



EA Yearlings

84E

Easy Ray Earnan 84E
DOB: 16/01/2017 REG: 1971662 EA 84E

CONNELLY EARNAN 076E
BORDER BUTTE EARNAN 29C
BORDER BUTTE DELLA 29W

TED FINAL ANSWER 2W
EASY RAY ERICA 34B
EASY RAY ERICA 17U

| BW | WW | YW | MILK | TM | CE | MARB | REA |
|------|-----|------|------|-----|------|-------|-------|
| +3.1 | +64 | +120 | +20 | +53 | +3.0 | +0.32 | +0.28 |

A cow bull that you will be proud to own, he's been packing on a lot of lean meat since birth. His gain is 4.55lbs/day and a 365D index of 118, and is the top 10% for docility. His ADJ WW is 747, just like the big airplane.

| |
|--------------|
| BW: 90 |
| ADJ WW: 747 |
| ADJ YW: 1475 |

95E

Easy Ray Impact 95E
DOB: 20/01/2017 REG: 1971673 EA 95E

POSS TOTAL IMPACT 745
ALLEN CROFT II IMPACT 07 3B
ALLEN CROFT BLACKCAP 03 204S

WESTERN DESIGN 517
EASY RAY LASS 27X
EASY RAY LASS 60N

| BW | WW | YW | MILK | TM | CE | MARB | REA |
|------|-----|-----|------|-----|------|-------|-------|
| +3.0 | +38 | +62 | +23 | +41 | +1.0 | +0.43 | +0.32 |

This "Impact" son is a cow bull that scored in the top 1% for dry matter intake traits. He's gained 3.34lbs/day in his first year.

| |
|--------------|
| BW: 96 |
| ADJ WW: 653 |
| ADJ YW: 1188 |

86E

Easy Ray Answer 86E
DOB: 16/01/2017 REG: 1971664 EA 86E

S A V FINAL ANSWER 0035
BORDER BUTTE FINAL ANSWER 111A
BORDER BUTTE DANIELLE 99W

NICHOLE EXRTA H6
EASY RAY FREDA 77P
EASY RAY FREDA 9L

| BW | WW | YW | MILK | TM | CE | MARB | REA |
|------|-----|-----|------|-----|------|-------|-------|
| +0.7 | +44 | +73 | +23 | +46 | +8.0 | +0.38 | +0.12 |

The dam "Easy Ray Freda 77P" is an elite cow that has sons at many ranches, including Warburger's, Murray's, Woodrich's, Chipman's and Robertson's. He's a heifer bull with nice calving ease and a 365 day gain of 3.50lbs/day.

| |
|--------------|
| BW: 82 |
| ADJ WW: 677 |
| ADJ YW: 1236 |

96E

Easy Ray Earnan 96E
DOB: 20/01/2017 REG: 1971672 EA 96E

CONNELLY EARNAN 076E
BORDER BUTTE EARNAN 29C
BORDER BUTTE DELLA 29W

BENCHMARK PREMIUM BEEF 9139
EASY RAY LUCY 44B
EASY RAY LUCY 2T

| BW | WW | YW | MILK | TM | CE | MARB | REA |
|------|-----|------|------|-----|------|-------|-------|
| +2.0 | +56 | +100 | +19 | +45 | +3.0 | +0.54 | +0.19 |

If you've raised your own heifers and they're on the big size then I wouldn't hesitate to use him, he's in the top 10% for yearling weights with a 365 day gain of 3.93lbs/day.

| |
|--------------|
| BW: 82 |
| ADJ WW: 609 |
| ADJ YW: 1238 |

89E

Easy Ray Finalize 89E
DOB: 17/01/2017 REG: 1971665 EA 89E

MOHNEN FINALIZE 1011
JF FINALIZE B28
JF HYALITE Z34

BENCHMARK CATALYST 135'11
EASY RAY LASS 86C
EASY RAY LASS 4R

| BW | WW | YW | MILK | TM | CE | MARB | REA |
|------|-----|-----|------|-----|------|-------|-------|
| +0.2 | +40 | +75 | +19 | +39 | +9.0 | +0.35 | +0.48 |

Using this heifer bull on your first calvers will definitely not leave you disappointed. His EPD profile is up to par and he's a great looking bull as well. He gained 4.14lbs/day in his first year, a plus in any heifer bull.

| |
|--------------|
| BW: 72 |
| ADJ WW: 633 |
| ADJ YW: 1296 |



EA Yearlings

100E *Easy Ray Tiger 100E*
 DOB: 24/01/2017 REG: 1971676 EA 100E

HF TIGER 5T
 HF TIGER 161A
 HF ECHO 178W

BENCHMARK RIBEYE 782
 EASY RAY ELBA 67X
 EASY RAY ELBA 7T

| BW | WW | YW | MILK | TM | CE | MARB | REA |
|------|-----|-----|------|-----|------|-------|-------|
| +1.8 | +46 | +80 | +24 | +47 | +8.0 | +0.42 | +0.41 |

His Grand dam is an Elite/Premiere cow that has 5 grand calves. He's a good cow or heifer bull that is in the top 15% for calving ease. 365 day gain of 3.72lbs/day.

| |
|--------------|
| BW: 87 |
| ADJ WW: 681 |
| ADJ YW: 1277 |



113E *Easy Ray Tiger 113E*
 DOB: 29/01/2017 REG: 1971685 EA 113E

HF TIGER 5T
 HF TIGER 161A
 HF ECHO 178W

WILLABAR FOURTRAX 182L
 EASY RAY ZARA 46T
 BAR DOUBLE M ZARA 59G

| BW | WW | YW | MILK | TM | CE | MARB | REA |
|------|-----|-----|------|-----|------|-------|-------|
| +1.1 | +49 | +75 | +12 | +39 | +4.0 | +0.31 | +0.21 |

It was a little tough to get a heifer bull out of the "Tiger" sire but here is one, he's recommended for the bigger heifers and his progeny should feed very well. His 365d day gain is 3.43lbs/day.

| |
|--------------|
| BW: 82 |
| ADJ WW: 678 |
| ADJ YW: 1227 |

118E *Easy Ray Tiger 118E*
 DOB: 31/01/2017 REG: 1971689 EA 118E

HF TIGER 5T
 HF TIGER 161A
 HF ECHO 178W

WILLABAR FOURTRAX 182L
 EASY RAY BUELAH 42T
 EASY RAY BUELAH 61N

| BW | WW | YW | MILK | TM | CE | MARB | REA |
|------|-----|-----|------|-----|------|-------|-------|
| +3.3 | +53 | +91 | +13 | +40 | -0.5 | +0.28 | +0.39 |

He's a twin bull out of a dam that's had 12 calves with 3 sets of twins. He'll be best placed in a cow herd and a wise choice as well. His 365 day gain is 4.02 lbs/day, a trait that'll be passed on to his offspring. A nice heavy yearling weight that's also indicated in his EPDs with a +91 yearling weight on future calves.

| |
|--------------|
| BW: 60 |
| ADJ WW: 670 |
| ADJ YW: 1314 |

115E *Easy Ray Impact 115E*
 DOB: 31/01/2017 REG: 1971687 EA 115E

POSS TOTAL IMPACT 745
 ALLENCROFT IMPACT 03 321C
 ALLENCROFT BLACKCAP 01 292Y

SOUTHLAND FREEDOM 74T
 EASY RAY KATE 64Y
 EASY RAY KATE 92P

| BW | WW | YW | MILK | TM | CE | MARB | REA |
|------|-----|-----|------|-----|------|-------|-------|
| -0.1 | +45 | +74 | +19 | +44 | +8.0 | +0.55 | +0.40 |

Another "Impact" offspring that's got super calving ease, a -0.1 birth weight EPD and 77 pounds at birth. Zoetis scores him in the top 1% for tenderness. His dam is a beautiful cow, such a looker. 365 day gain of 3.52lbs/day.

| |
|--------------|
| BW: 77 |
| ADJ WW: 688 |
| ADJ YW: 1251 |



EA Yearlings AU

119E *Easy Ray* Impact 119E
 DOB: 31/01/2017 REG: 1998755 EA 119E

POSS TOTAL IMPACT 745
 ALLENCROFT IMPACT 03 321C
 ALLENCROFT BLACKCAP 01 292Y

ALLENCROFT UPWARD 07 215X
 EASY RAY LUCY 20C
 EASY RAY LUCY 19W

| BW | WW | YW | MILK | TM | CE | MARB | REA |
|------|-----|-----|------|-----|------|-------|-------|
| -0.7 | +52 | +74 | +19 | +50 | +9.0 | +0.48 | +0.51 |

A super heifer bull that is loaded with calving ease, I can't stress enough that this is the type of bull that needs to be used on those first calvers. He was 64 pounds at birth and 673 a weaning, great growth right there!

| |
|--------------|
| BW: 64 |
| ADJ WW: 673 |
| ADJ YW: 1134 |



121E *Easy Ray* Impact 121E
 DOB: 03/02/2017 REG: 1971692 EA 121E

POSS TOTAL IMPACT 745
 ALLENCROFT IMPACT 03 321C
 ALLENCROFT BLACKCAP 01 292Y

BAR MM DATELINE 25P
 EASY RAY ZARA 32U
 EASY RAY PU 33K

| BW | WW | YW | MILK | TM | CE | MARB | REA |
|------|-----|-----|------|-----|------|-------|-------|
| +3.1 | +52 | +84 | +16 | +42 | +2.0 | +0.47 | +0.56 |

He's in the top 1% for tenderness and top 9% for docility, a cow bull with moderate EPDs. He's gained 3.47lbs/day in his first year, bringing him up to 1218 pounds at his yearling weight.

| |
|--------------|
| BW: 90 |
| ADJ WW: 662 |
| ADJ YW: 1218 |



123E *Easy Ray* Impact 123E
 DOB: 03/02/2017 REG: 1971693 EA 123E

POSS TOTAL IMPACT 745
 ALLENCROFT II IMPACT 07 3B
 ALLENCROFT BLACKCAP 03 204S

TED FINAL ANSWER 2W
 EASY RAY ELBA 57A
 EASY RAY ELBA 14U

| BW | WW | YW | MILK | TM | CE | MARB | REA |
|------|-----|-----|------|-----|------|-------|-------|
| +3.1 | +53 | +80 | +16 | +46 | +3.0 | +0.60 | +0.34 |

Another cow bull that weaned at 715 pounds, he's our highest marbling bull with an impressive +0.60 marbling EPD. He's in the top 1% for dry matter intake and he's also showing good tenderness. 365d gain is 3.27lbs/day.

| |
|--------------|
| BW: 92 |
| ADJ WW: 715 |
| ADJ YW: 1238 |

124E *Easy Ray* Impact 124E
 DOB: 04/02/2017 REG: 1971698 EA 124E

POSS TOTAL IMPACT 745
 ALLENCROFT IMPACT 03 321C
 ALLENCROFT BLACKCAP 01 292Y

ALLENCROFT UPWARD 07 215X
 EASY RAY ELBA 11Z
 EASY RAY ELBA 55W

| BW | WW | YW | MILK | TM | CE | MARB | REA |
|------|-----|------|------|-----|------|-------|-------|
| +1.6 | +65 | +105 | +21 | +54 | +7.0 | +0.53 | +0.57 |

Our beautiful dam "Elba 11Z" performed well for us again with a 88 pound heifer bull, she's a dam we are proud to own. She has her first male calf working at Circle Cross. 365d gain is 3.57lbs/day.

| |
|--------------|
| BW: 88 |
| ADJ WW: 761 |
| ADJ YW: 1331 |

EA Yearlings AU



129E *Easy Ray* Tiger 129E

DOB: 04/02/2017 REG: 1971696 EA 129E

HF TIGER 5T
HF TIGER 161A
HF ECHO 178W

BENCHMARK EFFICIENCY 0102
EASY RAY LASS 10A
EASY RAY LASS 31Y

| BW | WW | YW | MILK | TM | CE | MARB | REA |
|------|-----|------|------|-----|------|-------|-------|
| +4.0 | +66 | +111 | +15 | +56 | +1.0 | +0.26 | +0.46 |

Here's a cow bull with a tremendous EPD profile, he's in the top 2% for weaning weight, top 3% yearling weight, and 4% total maternal. 365 day gain of 3.82 lbs/day.

| |
|--------------|
| BW: 91 |
| ADJ WW: 748 |
| ADJ YW: 1360 |

132E *Easy Ray* Finalize 132E

DOB: 05/02/2017 REG: 1971700 EA 132E

MOHNEN FINALIZE 1011
JF FINALIZE B28
JF HYALITE Z34

HF TIGER 161A
EASY RAY LASS 133C
EASY RAY LASS 33Z

| BW | WW | YW | MILK | TM | CE | MARB | REA |
|------|-----|------|------|-----|------|-------|-------|
| +7.8 | +64 | +103 | +17 | +46 | -8.0 | +0.21 | +0.57 |

A cow bull with lots of performance all the way through, his 365 day gain is 4.18lbs a day and 365 Index is 109. Here's a good bull with good feed efficiency.

| |
|--------------|
| BW: 99 |
| ADJ WW: 690 |
| ADJ YW: 1359 |

141E *Easy Ray* Impact 141E

DOB: 04/02/2017 REG: 1971709 EA 141E

POSS TOTAL IMPACT 745
ALLEN CROFT IMPACT 03 321C
ALLEN CROFT BLACKCAP 01 292Y

EASY RAY IN FOCUS 3U
EASY RAY BUELAH 94Z
EASY RAY BUELAH 42T

| BW | WW | YW | MILK | TM | CE | MARB | REA |
|------|-----|-----|------|-----|------|-------|-------|
| +1.1 | +50 | +89 | +22 | +48 | +5.0 | +0.46 | +0.58 |

He was only 81 pounds at birth and I'd recommend using him for heifers. He's got good carcass EPD, his EPDs and Zoetis scores are all on the same page, ranking high in all the right places. His grand dam is an Elite cow. 365 day gain is at 3.85lbs/day.

| |
|--------------|
| BW: 81 |
| ADJ WW: 727 |
| ADJ YW: 1343 |



142E *Easy Ray* Tiger 142E

DOB: 10/02/2017 REG: 1971713 EA 142E

HF TIGER 5T
HF TIGER 161A
HF ECHO 178W

EASY RAY STANDARD 20T
EASY RAY ERICA 23X
EASY RAY ERICA 5U

| BW | WW | YW | MILK | TM | CE | MARB | REA |
|------|-----|-----|------|-----|------|-------|-------|
| +0.1 | +52 | +95 | +20 | +47 | +7.0 | +0.38 | +0.31 |

Hey! Look! A really nice heifer bull out of a Tiger. He's got lots of growth with a 365 day gain of 3.73lbs/day.

| |
|--------------|
| BW: 78 |
| ADJ WW: 710 |
| ADJ YW: 1306 |

EA Yearlings

143E *Easy Ray* Impact 143E
 DOB: 10/02/2017 REG: 1971712 EA 143E

POSS TOTAL IMPACT 745
 ALLENCROFT IMPACT 03 321C
 ALLENCROFT BLACKCAP 01 292Y

EASY RAY IN FOCUS 3U
 EASY RAY LUCY 31Z
 EASY RAY LUCY 38T

| BW | WW | YW | MILK | TM | CE | MARB | REA |
|------|-----|-----|------|-----|------|-------|-------|
| +1.5 | +52 | +86 | +20 | +46 | +5.0 | +0.47 | +0.41 |

Just a nice looking bull with some good carcass EPDs. He's got the +5.0 calving ease EPD that makes him ok for bigger heifers and definitely for cows. Moderate scores throughout, and good weights as well. 365d gain is 3.36lbs/day.

| |
|--------------|
| BW: 88 |
| ADJ WW: 703 |
| ADJ YW: 1241 |

148E *Easy Ray* Impact 148E
 DOB: 11/02/2017 REG: 1971708 EA 148E

POSS TOTAL IMPACT 745
 ALLENCROFT IMPACT 03 321C
 ALLENCROFT BLACKCAP 01 292Y

WESTERN DESIGN 517
 EASY RAY BLUE LADY 31W
 EASY RAY BLUE LADY 92S

| BW | WW | YW | MILK | TM | CE | MARB | REA |
|------|-----|-----|------|-----|------|-------|-------|
| +0.5 | +48 | +90 | +21 | +46 | +7.0 | +0.40 | +0.50 |

He's got some great top numbers on his Zoetis profile including top 2% for Tenderness. He's got a high ribeye and marbling as well. He's recommended for heifers, as shown in his EPDs. 365 day gain is 3.80lbs/day.

| |
|--------------|
| BW: 83 |
| ADJ WW: 692 |
| ADJ YW: 1300 |



149E *Easy Ray* Impact 149E
 DOB: 11/02/2017 REG: 1971715 EA 149E

POSS TOTAL IMPACT 745
 ALLENCROFT IMPACT 03 321C
 ALLENCROFT BLACKCAP 01 292Y

ALLENCROFT UPWARD 07 215X
 EASY RAY ELBA 82C
 EASY RAY ELBA 73Y

| BW | WW | YW | MILK | TM | CE | MARB | REA |
|------|-----|-----|------|-----|------|-------|-------|
| +5.3 | +58 | +97 | +17 | +43 | -6.0 | +0.47 | +0.52 |

These "Impacts" are very correct cattle, don't miss out on them. He's definitely made for cows and his 365 day gain was at 4.16lbs/day, bringing him up to a 1327 yearling weight. Very impressive performance on this one!

| |
|--------------|
| BW: 92 |
| ADJ WW: 661 |
| ADJ YW: 1327 |

146E *Easy Ray* Earnan 146E
 DOB: 10/02/2017 REG: 1971710 EA 146E

POSS TOTAL IMPACT 745
 ALLENCROFT IMPACT 03 321C
 ALLENCROFT BLACKCAP 01 292Y
 BENCHMARK CATALYST 135'11
 EASY RAY ELLA 23B
 EASY RAY ELLA 87Z

| BW | WW | YW | MILK | TM | CE | MARB | REA |
|-----|-----|-----|------|-----|------|------|-----|
| 0.0 | +59 | +92 | +23 | +53 | +8.0 | - | - |

The "Earnan" bloodline brings with it the great calving ease that's so important for those first calvers, and this guy doesn't disappoint. He's got +8.0 calving ease and a great +59 weaning weight, these two paired together will bring you some good weaning calves in the fall. Awesome feed efficiency profile.

| |
|--------------|
| BW: 77 |
| ADJ WW: 698 |
| ADJ YW: 1188 |



EA Yearlings



150E *Easy Ray* Earnan 150E
 DOB: 12/02/2017 REG: 1971719 EA 150E

CONNELLY EARNAN 076E
 BORDER BUTTE EARNAN 29C
 BORDER BUTTE DELLA 29W

ALLENCROFT UPWARD 07 215X
 EASY RAY LASS 132B
 EASY RAY LASS 48U

| BW | WW | YW | MILK | TM | CE | MARB | REA |
|------|-----|-----|------|-----|------|-------|-------|
| +4.5 | +64 | +98 | +21 | +52 | -3.0 | +0.25 | +0.40 |

Another 700lb calf at weaning, a designated cow bull that'll get the job done. I'm very impressed and love these "Earnan" bulls, they've turned out great. 365 day gain is 3.35lbs/day.

| |
|--------------|
| BW: 92 |
| ADJ WW: 695 |
| ADJ YW: 1231 |

160E *Easy Ray* Earnan 160E
 DOB: 21/02/2017 REG: 1971730 EA 160E

CONNELLY EARNAN 076E
 BORDER BUTTE EARNAN 29C
 BORDER BUTTE DELLA 29W

EASY RAY IN FOCUS 3U
 EASY RAY PU 87Y
 EASY RAY PU 33K

| BW | WW | YW | MILK | TM | CE | MARB | REA |
|------|-----|-----|------|-----|------|-------|-------|
| +0.8 | +47 | +91 | +21 | +38 | +6.0 | +0.41 | +0.28 |

This stud is waiting to prove himself with a 365 day gain of 4.24lbs/day. He's got a lot to be proud of, just give his EPD profile a scan. Without a doubt, he's a heifer bull. 365 day index is at 110.

| |
|--------------|
| BW: 79 |
| ADJ WW: 616 |
| ADJ YW: 1295 |

155E *Easy Ray* Impact 155E
 DOB: 14/02/2017 REG: 1971722 EA 155E

POSS TOTAL IMPACT 745
 ALLENCROFT IMPACT 03 321C
 ALLENCROFT BLACKCAP 01 292Y

ALLENCROFT UPWARD 07 215X
 EASY RAY ELLA 86B
 EASY RAY ELLA 60W

| BW | WW | YW | MILK | TM | CE | MARB | REA |
|------|-----|-----|------|-----|------|-------|-------|
| +1.2 | +52 | +89 | +17 | +50 | +7.0 | +0.36 | +0.50 |

Definitely a good bull for heifers that's got some solid EPDs straight across. Incredible feed efficiency! With a 365 day gain weight of 3.65lbs/day. He's almost 1300 pounds on his yearling weight.

| |
|--------------|
| BW: 80 |
| ADJ WW: 707 |
| ADJ YW: 1290 |

161E *Easy Ray* Impact 161E
 DOB: 21/02/2017 REG: 1971729 EA 161E

POSS TOTAL IMPACT 745
 ALLENCROFT IMPACT 03 321C
 ALLENCROFT BLACKCAP 01 292Y

BENCHMARK CATALYST 135'11
 EASY RAY COUNTESS 34A
 EASY RAY FOCUS 82X

| BW | WW | YW | MILK | TM | CE | MARB | REA |
|------|-----|------|------|-----|-----|-------|-------|
| +4.8 | +65 | +111 | +20 | +51 | 0.0 | +0.59 | +0.53 |

A cow bull that's filled with carcass and performance. Scoring a +111 yearling weight EPD, he's sure to own up to that one. Zoetis placed him at the top 9% for tenderness and top 3% for weaning and yearling weights. A gain of 3.78lbs/day.

| |
|--------------|
| BW: 98 |
| ADJ WW: 740 |
| ADJ YW: 1345 |

EA Yearlings AU

162E *Easy Ray* Impact 162E
 DOB: 21/02/2017 REG: 1971731 EA 162E

POSS TOTAL IMPACT 745
 ALLENCROFT IMPACT 03 321C
 ALLENCROFT BLACKCAP 01 292Y

WESTERN DESIGN 517
 EASY RAY LUCY 33U
 EASY RAY LUCY 7R

| BW | WW | YW | MILK | TM | CE | MARB | REA |
|------|-----|-----|------|-----|------|-------|-------|
| +0.5 | +49 | +80 | +23 | +48 | +8.0 | +0.50 | +0.42 |

We are down to one of the last heifer bulls, he's got outstanding carcass and milk EPDs. His Dam is a very nice cow that just had her tenth calf, she has sons at Chipman, Ferguson, Murray, and Jake Noble. All females retained for our own herd. 365 day gain of 3.43lbs/day.

| |
|--------------|
| BW: 82 |
| ADJ WW: 706 |
| ADJ YW: 1255 |

167E *Easy Ray* Earnan 167E
 DOB: 25/02/2017 REG: 1971737 EA 167E

POSS TOTAL IMPACT 745
 ALLENCROFT IMPACT 03 321C
 ALLENCROFT BLACKCAP 01 292Y

BENCHMARK EFFICIENCY 0102
 EASY RAY ELLA 104A
 EASY RAY ELLA 97Z

| BW | WW | YW | MILK | TM | CE | MARB | REA |
|------|-----|------|------|-----|------|-------|-------|
| +3.1 | +68 | +102 | +26 | +59 | +2.0 | +0.38 | +0.38 |

A cow bull with great EPDs, he's foretelling superb growth on all future calves and even has a small amount of calving ease. His weaning weight is at 768 pounds and has an index of 115, and 365 day gain of 3.61lbs/day.

| |
|--------------|
| BW: 92 |
| ADJ WW: 768 |
| ADJ YW: 1345 |

165E *Easy Ray* Impact 165E
 DOB: 22/02/2017 REG: 1971733 EA 165E

POSS TOTAL IMPACT 745
 ALLENCROFT IMPACT 03 321C
 ALLENCROFT BLACKCAP 01 292Y

WILLABAR FUTURE DIRECTION 71R
 EASY RAY ZARA 3W
 EASY RAY ZARA 21R

| BW | WW | YW | MILK | TM | CE | MARB | REA |
|------|-----|-----|------|-----|------|-------|-------|
| +3.0 | +57 | +91 | +20 | +47 | +2.0 | +0.50 | +0.47 |

A cow bull that should not disappoint, creeping close to 1300 pounds at his weaning weight and a 365 day gain of 3.44lbs/day. He's got good feed efficiency and also some tenderness.

| |
|--------------|
| BW: 98 |
| ADJ WW: 721 |
| ADJ YW: 1271 |

172E *Easy Ray* Impact 172E
 DOB: 01/03/2017 REG: 1971740 EA 172E

POSS TOTAL IMPACT 745
 ALLENCROFT IMPACT 03 321C
 ALLENCROFT BLACKCAP 01 292Y

TED FINAL ANSWER 2W
 EASY RAY ZARA 33A
 EASY RAY ZARA 37W

| BW | WW | YW | MILK | TM | CE | MARB | REA |
|------|-----|------|------|-----|-----|-------|-------|
| +4.9 | +64 | +103 | +19 | +50 | 0.0 | +0.48 | +0.46 |

He's a great looking cow bull with top 4% weaning weight and 9% yearling weight. This one will have great performance and nice carcass calves. His 365 day gain is 3.54lbs/day.

| |
|--------------|
| BW: 96 |
| ADJ WW: 758 |
| ADJ YW: 1325 |



EA Yearlings

173E *Easy Ray* Impact 173E

DOB: 01/03/2017 REG: 1971741 EA 173E

POSS TOTAL IMPACT 745
 ALLENCROFT IMPACT 03 321C
 ALLENCROFT BLACKCAP 01 292Y

EASY RAY IN FOCUS 3U
 EASY RAY BUELAH 98Z
 EASY RAY BUELAH 24U

| BW | WW | YW | MILK | TM | CE | MARB | REA |
|------|-----|-----|------|-----|------|-------|-------|
| +1.8 | +55 | +88 | +20 | +48 | +6.0 | +0.48 | +0.53 |

I'm going to suggest that this will be a good bull for big heifers. I love his dam, she's a really beautiful cow with a great profile. He's got good carcass projections and is in the top 1% for tenderness. 365 day gain of 3.41lbs/day.

| |
|--------------|
| BW: 85 |
| ADJ WW: 755 |
| ADJ YW: 1300 |



Steve Brander
 Senior Territory Manager, Cattle

Zoetis Canada Inc
 16740 Trans-Canada Highway
 Kirkland, QC H9H 4M7
 M 403 462 9972 F 403 653 2557
 VM 1 800 999 2857 Ext 2836 E steve.brander@zoetis.com

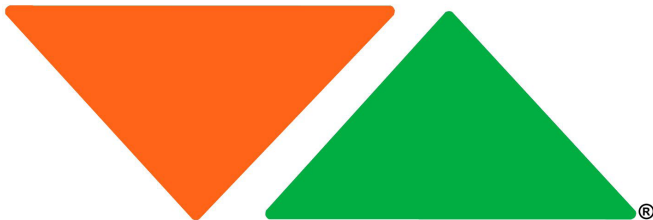


CLAYTON
 (403) 715-6850



WESTERN TRACTOR

HI-PRO



DOUG HOLT
 (403) 330-5549

FEEDS

MNIP

ROBIN
 (403) 329-1552

ATB

ROB JENSON
 (403) 394-4617

Hugh Locke
 Territory Manager
 Certified Feed Industry Advisor



Masterfeeds INC.

6015 - 54 Ave., Taber, Alberta T1G 1X4
 Phone: (403) 223-4444
 Fax: (403) 223-1141
 Cell: (403) 380-9808
 E-mail: hlocke@masterfeeds.com
 www.masterfeeds.com

Ririe Simmentals

Making the decision to transition into pure bred Simmentals was an easy one, especially with the dispersal of Rainalta Simmentals, owned by Bill Swenson. This opportunity on the market gave us a great foundation for our initial year. With the work we put into these bulls and the results we have seen, reinforces that our decision was a good one. We'd like to thank East Raymond Colony, and also Brian Bouchard or Bouchard Livestock as well as Hi-Pro Feeds for contributions to our program. We are extremely proud of these animals and know they will be an asset to any operation.

Sire C

WFL IDENTITY 23X
25/01/2010 736758 WFL 23X

R PLUS BLACKHEDGE

R PLUS REDGE 8018U
MISS R PLUS 3158N

LFE BLACK BULLSEYE 319J

WFL RED LICIOUS
WFL RED DOLL 517H

| BW | WW | YW | MILK | TM | CE | MARB | REA |
|------|-----|-----|------|----|------|-------|-------|
| +2.4 | +57 | +62 | +9 | - | +8.1 | -0.29 | +0.60 |

BW: 95

ADJ WW: 834

ADJ YW: N/A

Sire A

MRL WESTERN FORCE 251
04/29/2014 1161020 MRL 251B

MRL RED FORCE 12U

MRL 67X
IPU RED SATIN 177M

IPU RED WESTERN 49X

MRL MISS 2543Z
MRL MISS 212L

| BW | WW | YW | MILK | TM | CE | MARB | REA |
|------|-----|------|------|----|------|-------|-------|
| +2.3 | +78 | +110 | +24 | - | +8.5 | +0.10 | +0.68 |

BW: 70

ADJ WW: 741

ADJ YW: N/A

Sire D

KWA ROCK 78Z
01/02/2012 765791 KWA 78Z

DAY RED PEPPER DOC 984R

KWA RED ROCK 5T
KWA MS ROCK 7P

SAS/ASF ALL STAR

TLRS SASHA
TLRS RED DREAM

| BW | WW | YW | MILK | TM | CE | MARB | REA |
|------|-----|------|------|----|-------|-------|-------|
| +3.7 | +93 | +149 | +23 | - | +14.3 | +0.04 | +0.47 |

BW: 96

ADJ WW: 795

ADJ YW: 1337

Sire B

MRL CAPONE 130B
26/01/2014 1116713 MRL 130B

DCR MR MOONSHINE X102

TNT BOOTLEGGER Z268
TNT MISS W70

MRL BLACK BEAR 79S

MRL MISS 836W
MRL MISS 828S

| BW | WW | YW | MILK | TM | CE | MARB | REA |
|------|-----|------|------|----|-------|-------|-------|
| +3.5 | +71 | +110 | +19 | - | +10.8 | +0.05 | +0.67 |

BW: 96

ADJ WW: 760

ADJ YW: 1370

Sire E

MRL RED WHISKEY 101B
18/01/2014 1116711 MRL 101B

DCR MR MOON SHINE X102

TNT BOOTLEGGER Z268
TNT MISS W70

KOP CROSBY 137W

MRL MISS 677Y
MRL MISS 355T

| BW | WW | YW | MILK | TM | CE | MARB | REA |
|------|-----|------|------|----|------|-------|-------|
| +5.7 | +85 | +128 | +21 | - | +7.6 | +0.09 | +0.59 |

BW: 90

ADJ WW: 742

ADJ YW: 1331

Ririe Simmentals

1E Ririe Force 1E

DOB: 15/01/2017 REG: 1202563 NOFX 1E

MRL 67X

MRL WESTERN FORCE 251B
MRL MISS 2543Z

RAINALTA DOUBLE DOWN 77A

RAINALTA LAURA 62C

SUN STAR LAURA 16R

| BW | WW | YW | MILK | TM | CE | MARB | REA |
|-----|-----|-----|------|----|------|-------|-------|
| 2.4 | +66 | +93 | +24 | - | +9.0 | +0.04 | +0.61 |

This strong, deep red bull has remarkable bloodlines, coming from sire and dam. Attractive build through the front end with visible power build in the back. Sire "Western Force" is arguably the top choice for calving ease within the simmental breed. This is a great opportunity to get his lineage and desirable traits.

| |
|--------------|
| BW: 80 |
| ADJ WW: 630 |
| ADJ YW: 1168 |



5E Ririe Western Thunder 5E

DOB: 28/01/2017 REG: 1202572 NOFX 5E

MRL 67X

MRL WESTERN FORCE 251B
MRL MISS 2543Z

CDI AUTHORITY 77X

RAINALTA THUNDER 29C

KIMLAKE THUNDER 839U

| BW | WW | YW | MILK | TM | CE | MARB | REA |
|------|-----|-----|------|----|-------|-------|-------|
| +2.4 | +70 | +95 | +26 | - | +10.2 | +0.02 | +0.75 |

Another son of Western Force, noted with many attributes. He comes with a beautiful, dark red colouring along with a smooth head and shoulders. Numbers speak loudly with this one, falling in the top 30% for birth weight and top 20% for calving ease with above average performance. This one proves to be a force to be reckoned with.

| |
|--------------|
| BW: 85 |
| ADJ WW: 617 |
| ADJ YW: 1218 |

10E Ririe Capone 10E

DOB: 04/02/2017 REG: 1202585 NOFX 10E

TNT BOOTLEGGER Z268

MRL CAPONE 130B
MRL MISS 836W

MRL RED FORCE 12U

RAINALTA HCCL 4K 44A

RAINALTA NOVAHUMMER 21Y

| BW | WW | YW | MILK | TM | CE | MARB | REA |
|------|-----|------|------|----|-------|-------|-------|
| +2.2 | +67 | +102 | +21 | - | +12.4 | +0.05 | +0.90 |

Another son out of our "Capone" sire, he's got the same red colour, power and sensational bloodlines. This guy's numbers speak for themselves. Just a tremendous performer. A well rounded, attractive bull.

| |
|--------------|
| BW: 89 |
| ADJ WW: 713 |
| ADJ YW: 1335 |

9E Ririe Sonny Capone 9E

DOB: 03/02/2017 REG: 1202584 NOFX 9E

TNT BOOTLEGGER Z268

MRL CAPONE 130B
MRL MISS 836W

WHEATLAND RED ACE 747T

RAINALTA CANADIAN ACE 9W

RAINALTA RED BALDY 37R

| BW | WW | YW | MILK | TM | CE | MARB | REA |
|------|-----|------|------|----|-------|-------|-------|
| +2.6 | +69 | +103 | +23 | - | +10.8 | +0.05 | +0.47 |

This guy has been a performer since the start. He has been catching the eyes of Simmental breeders for some time, with powerful stature and scale performance. He's a pen favourite, with a high weaning weight, and good looking EPDs, he would make a great addition to any herd.

| |
|--------------|
| BW: 106 |
| ADJ WW: 854 |
| ADJ YW: 1218 |



Ririe Simmentals

11E Ririe Capone 11E

DOB: 06/02/2017 REG: 1202589 NOFX 11E

TNT BOOTLEGGER Z268

MRL CAPONE 130B
MRL MISS 836W

KS BRAVADO P68

RAINALTA BRAVO CAESAR 36X
RAINALTA TOMBOYCAESAR 56U

| BW | WW | YW | MILK | TM | CE | MARB | REA |
|------|-----|-----|------|----|-------|-------|-------|
| +2.4 | +66 | +99 | +26 | - | +11.5 | -0.03 | +0.59 |

Capone strikes again, with this superior bull. This fella has a great full build, from head to tail, consistent with that amazing red colour and great calving ease.

| |
|--------------|
| BW: 82 |
| ADJ WW: 701 |
| ADJ YW: 1226 |



14E Ririe Identity 14E

DOB: 09/02/2017 REG: 1202592 NOFX 14E

R PLUS REDGE 8018U

WFL IDENTITY 23X
WFL RED LICIOUS

KS RED BY DESIGN N968

RAINALTA TUCAN 36T
RAINALTA HCCL 39N

| BW | WW | YW | MILK | TM | CE | MARB | REA |
|------|-----|-----|------|----|------|-------|-------|
| +3.9 | +62 | +85 | +11 | - | +5.4 | -0.11 | +0.64 |

Sire "Identity" passes along trademark qualities to this bull. Placing in the top 4% for maternal calving ease, commendable rate of gain, and, most importantly, great curly hair.

| |
|--------------|
| BW: 102 |
| ADJ WW: 773 |
| ADJ YW: 1424 |

16E Ririe Pendelton Whiskey 16E

DOB: 13/02/2017 REG: 1202594 NOFX 16E

TNT BOOTLEGGER Z268

MRL RED WHISKEY 101B
MRL MISS 677Y

IPU ACCELERATOR 46U

RAINALTA REGENT ACCEL 85Y
RAINALTA BOZ 65N

| BW | WW | YW | MILK | TM | CE | MARB | REA |
|------|-----|------|------|----|------|-------|-------|
| +4.2 | +72 | +100 | +22 | - | +7.6 | +0.02 | +0.58 |

We were excited to introduce the Red Whiskey lineage, because of the superior build, coat, and performance this bull produces, to name a few. These attributes are evident in this son of his that we have raised, with a good weaning weight.

| |
|--------------|
| BW: 99 |
| ADJ WW: 748 |
| ADJ YW: 1250 |

15E Ririe Rock 15E

DOB: 11/02/2017 REG: 1202593 NOFX 15E

KWA RED ROCK 5T

KWA ROCK 78Z
TLRS SASHA

KNK/CRSR RED BULL 53T

RAINALTA RED NOVA 41Y
RAINALTA HCCL 39N

| BW | WW | YW | MILK | TM | CE | MARB | REA |
|------|-----|------|------|----|------|-------|-------|
| +4.6 | +81 | +130 | +18 | - | +5.5 | +0.08 | +0.76 |

Prior to dispersal, this bull's sire "Rock" served as herd bull for Bill Swenson and Ashworth farm and ranch, showing top percentiles in calving, weaning and yearling weights. Not much to complain about with this guy, and his stats. Top 10% for weaning weight, top 2% for yearling weight, and a tall frame with room to pack the pounds on.

| |
|--------------|
| BW: 105 |
| ADJ WW: 830 |
| ADJ YW: 1340 |



Ririe Simmentals

17E Ririe Capone 17E

DOB: 14/02/2017 REG: 1202595 NOFX 17E

TNT BOOTLEGGER Z268

MRL CAPONE 130B
MRL MISS 836W

RED BARON HR P101
RAINALTA RED MARVEL 5U
RAINALTA MARVEL 20M

| BW | WW | YW | MILK | TM | CE | MARB | REA |
|------|-----|------|------|----|-------|-------|-------|
| +3.2 | +71 | +107 | +22 | - | +10.0 | +0.10 | +0.70 |

Keeping with Capone bloodline strengths, this bull has high calving ease with an ideal birth weight of 90 lbs and an above average rate of gain. The amount of potential here is unlimited.

| |
|--------------|
| BW: 90 |
| ADJ WW: 820 |
| ADJ YW: 1270 |

25E Ririe Identity 14E

DOB: 09/02/2017 REG: 1202592 NOFX 14E

R PLUS REDGE 8018U

WFL IDENTITY 23X
WFL RED LICIOUS

KS RED BY DESIGN N968
RAINALTA TUCAN 36T
RAINALTA HCCL 39N

| BW | WW | YW | MILK | TM | CE | MARB | REA |
|------|-----|-----|------|----|------|-------|-------|
| +3.9 | +62 | +85 | +11 | - | +5.4 | -0.11 | +0.64 |

A great opportunity with this bull. His numbers place him in the top 10% for both yearling and weaning weight. Phenomenal rate of gain, with the later date of birth. He keeps that attractive red colouring mix with the ideal body type for any outfit.

| |
|--------------|
| BW: 100 |
| ADJ WW: 819 |
| ADJ YW: 1341 |

21E Ririe Identity Theft 21E

DOB: 25/02/2017 REG: 122028 NOFX 21E

R PLUS REDGE 8018U

WFL IDENTITY 23X
WFL RED LICIOUS

KS BRAVADO P68
ASP MS BRAVADO 13W
ASP MS WARRIOR 51T

| BW | WW | YW | MILK | TM | CE | MARB | REA |
|------|-----|-----|------|----|-----|-------|-------|
| +2.1 | +56 | +73 | +17 | - | +10 | -0.20 | +0.52 |

Consistent with the curly coat hair, this son of "Identity" bodes good calving ease, and passing along that high maternal calving ease ideal for any herd. The bloodlines here are remarkable, making this bull a good contender.

| |
|--------------|
| BW: 85 |
| ADJ WW: 750 |
| ADJ YW: 1250 |

26E Ririe Rock 26E

DOB: 22/03/2017 REG: 1202605 NOFX 26E

KWA RED ROCK 5T

KWA ROCK 78Z
TLRS SASHA

KWA DYNAMITE RED 112P
RAINALTA DYNOTOM 15Y
HCCL 31J

| BW | WW | YW | MILK | TM | CE | MARB | REA |
|------|-----|------|------|----|-----|-------|-------|
| +3.5 | +73 | +113 | +20 | - | +11 | -0.08 | +0.52 |

This bull has the whole package, with sound numbers, high smooth head and remarkable colouring. He would make a great asset to any operation with ranking in the top 25th percentage for weaning weight and the top 15th percentage for yearling weight.

| |
|--------------|
| BW: 107 |
| ADJ WW: 774 |
| ADJ YW: 1360 |

24E Ririe Rock 24E

DOB: 10/03/2017 REG: 1202603 NOFX 24E

KWA RED ROCK 5T

KWA ROCK 78Z
TLRS SASHA

KNK/CRSR RED BULL 53T
RAINALTA RED DESIGN 62Y
RAINALTA TRISTAN 23T

| BW | WW | YW | MILK | TM | CE | MARB | REA |
|------|-----|------|------|----|------|-------|-------|
| +3.7 | +75 | +115 | +17 | - | +6.8 | -0.01 | +0.72 |

Another product of the former Swenson/Ashworth lineage, "Rock"'s son. Earning a spot in the top 15% of yearling weight and the top 20% of weaning weight.

| |
|--------------|
| BW: 102 |
| ADJ WW: 710 |
| ADJ YW: 1150 |



BMB Brewin

ANGUS

Welcome everyone to our 10th year as guest consignor with Easy Ray Angus. Wow that's hard to believe. We would like to thank Easy Ray Angus for inviting us to be a part of this sale and for all the hard work that is put into this sale. If you are in need of some replacement heifers this spring, we will have a very strong group on offer and will be palpated. We have a good variety of bulls on offer this year. Heifer bulls and good performance cow bulls with a variety of sire groups.. The bulls will all be semen tested and vet checked prior to the sale. We invite and encourage past and future buyers to come to the farm to look at the bulls and heifers we have on offer prior to the sale. We look forward to visiting with you prior to the sale at the farm or on sale day.

Brent & Myrna , Devin, Janessa Brewin

Sire A

RED BROWN JYJ REDEMPTION Y1334
14/01/2011 1720864 IMP 1334Y

RED BECKTON NEBULA M045
RED BECKTON NEBULA P P707
RED BECKTON LANA M809 EP

RED LJC MISSION STATEMENT P27
RED JYJ MS JOLENE W16
HXC JOLENE R548

| BW | WW | YW | MILK | TM | CE | MARB | REA |
|------|-----|------|------|-----|-------|-------|-------|
| -5.2 | +63 | +111 | +20 | +51 | +17.3 | +0.74 | +0.05 |

| |
|-------------|
| BW: N/A |
| ADJ WW: N/A |
| ADJ YW: N/A |

Sire C

RED HOWE TEMPT 87B
01/03/2014 1811038 MHZ 87B

HF TIGER 5T
TOWAW TEMPT 15X
RED TOWAW SHAWN 3P

RED VII DOMINOR 2N
RED HOWE MS CRESTON 80S
RED HOWE MS CRESTON DDH 119D

| BW | WW | YW | MILK | TM | CE | MARB | REA |
|------|-----|-----|------|-----|------|-------|-------|
| -0.5 | +52 | +84 | +18 | +44 | +4.1 | +0.34 | -0.03 |

| |
|--------------|
| BW: 94 |
| ADJ WW: 828 |
| ADJ YW: 1404 |

Sire B

RED ANCHOR 1 RED KODIAK 88C
11/02/2015 1857449 RKKG 88C

BLACK BRYLOR KODIAK 204Y
RED BRYLOR RED KODIAK 3A
RED BRYLOR FAYETTE 40Y

RED SPRING CREEK HI HO 8K
RED ROYAL FLAMETTE 3P
RED ROYAL 30Y FLAMETTE 63C

| BW | WW | YW | MILK | TM | CE | MARB | REA |
|------|-----|-----|------|-----|-------|-------|-------|
| -4.8 | +39 | +48 | +22 | +42 | +10.4 | +0.15 | +0.01 |

| |
|-------------|
| BW: 73 |
| ADJ WW: 671 |
| ADJ YW: N/A |

Sire D

RED MAC MISSION 121C
14/02/2015 1862633 ZDM 121C

RED U2 MISSION 61W
RED GEIS MISSION 221'11
RED GEIS SYRINGA 60'08

RED CROWFOOT COWBOY 7206T
RED XO CROWFOOT GOLDETTE 0132X
RED CROWFOOT GOLDETTE 6314S

| BW | WW | YW | MILK | TM | CE | MARB | REA |
|------|-----|-----|------|-----|------|-------|-------|
| -3.2 | +34 | +48 | +17 | +34 | +7.9 | +0.11 | +0.42 |

| |
|--------------|
| BW: 73 |
| ADJ WW: 661 |
| ADJ YW: 1108 |

BMB Brewin

ANGUS

Sire E

RED BRYLOR RED KODIAK 3A
11/01/2013 1736024 LMP 3A

HF KODIAK 5R
BLACK BRYLOR KODIAK 204Y
RED XXX LAKME 70M

RED BRYLOR SDL PASQUALE 213P
RED BRYLOR FAYETTE 40Y
RED FL FAYETTE 33M

| BW | WW | YW | MILK | TM | CE | MARB | REA |
|------|-----|-----|------|-----|-------|-------|-------|
| -4.8 | +65 | +79 | +23 | +55 | +10.4 | +0.21 | +0.06 |

| |
|-------------|
| BW: 75 |
| ADJ WW: 812 |
| ADJ YW: N/A |

Sire H

RED DOUBLE B BULLSEYE 1B
03/02/2014 1788640 BAX 1B

RED COCKBURN RIBEYE 308U
RED SOO LINE POWER EYE 161X
RED TR LYNN 301R

RED RINGSTEAD KARGO 215U
RED BLAIRS PRICILLA 44Z
RED BRYLOR PRISCILLA 67W

| BW | WW | YW | MILK | TM | CE | MARB | REA |
|------|-----|------|------|-----|------|-------|-------|
| +1.6 | +66 | +106 | +7 | +40 | -0.6 | +0.41 | -0.16 |

| |
|-------------|
| BW: 83 |
| ADJ WW: 871 |
| ADJ YW: N/A |

Sire F

RED LONE STONE REVOLVER 138Z
29/01/2012 1662050 LNK 138Z

RED TER-RON FULLY LOADED 540R
RED CLAY COLT 21X
RED VIKSE ROBIN'S PRIME 97J

RED HB GENERAL 103N
RED LONE STONE JENNA 95U
RED MYALTA 104H POLLY 68P

| BW | WW | YW | MILK | TM | CE | MARB | REA |
|------|-----|------|------|-----|------|-------|-------|
| +5.0 | +87 | +152 | +5 | +49 | -4.5 | +0.17 | -0.14 |

| |
|--------------|
| BW: 102 |
| ADJ WW: 935 |
| ADJ YW: 1522 |

Sire I

RED BRYLOR STALLION 19J
10/02/1999 965741 LMP 19J

RED BHC STRYKER
RED BHC SANDSTONE
RED RN-AMBER-083

RED BRYLOR NEW TREND 22D
RED PTTV COUNTESS 13'97
RED HEATHAN'S COUNTESS 1E

| BW | WW | YW | MILK | TM | CE | MARB | REA |
|------|-----|-----|------|-----|------|-------|-------|
| +5.2 | +58 | +93 | -2 | +27 | -4.2 | +0.27 | -0.53 |

| |
|--------------|
| BW: 87 |
| ADJ WW: 735 |
| ADJ YW: 1346 |

Sire J

RED TROTTERS STRONGHOLD 156
25/10/2011 1772015 LMP 156Y

RED GMRA CITADEL 6109
RED LJT CITADEL 812
RED RCJS JERRI

RED TROTTERS ADVANCE 140
RED LJT PEARL 579
RED TROTTER PEARL 312

| BW | WW | YW | MILK | TM | CE | MARB | REA |
|------|-----|------|------|-----|------|-------|-------|
| +5.3 | +88 | +137 | +11 | +55 | -1.4 | +0.60 | +0.43 |

| |
|-------------|
| BW: N/A |
| ADJ WW: N/A |
| ADJ YW: N/A |

Sire K

RED BRYLOR TOAST 30T
05/02/2007 1395554 LMP 30T

RED COMPASS MULBERRY 449M
RED FINE LINE MULBERRY 26P
RED DUS FAYETTE 8G

RED SK MANKOTA 135R
RED BMB SCARLET FIREFLY 69U
RED BMB FIREFLY FREEDOM 9S

| BW | WW | YW | MILK | TM | CE | MARB | REA |
|------|-----|-----|------|-----|-------|-------|-------|
| -5.4 | +52 | +85 | +16 | +42 | +14.0 | +0.26 | -0.17 |

| |
|--------------|
| BW: 80 |
| ADJ WW: 628 |
| ADJ YW: 1229 |

BMB Brewin

ANGUS

53E ^{Red} *BMB* Delar Redemption 53E
 DOB: 18/02/2017 REG: 2005351 BLS 53E

RED BECKTON NEBULA P P707
 RED BROWN JYJ REDEMPTION Y1334
 RED JYJ MS JOLENE W16

RED TOWAW INDEED 104H
 RED DELAR MISS LADY DIANNE 53Z
 RED DELAR ATTRACTION

| BW | WW | YW | MILK | TM | CE | MARB | REA |
|------|-----|-----|------|-----|------|-------|-------|
| -3.8 | +49 | +84 | +21 | +49 | +6.4 | +0.48 | -0.05 |

Smooth made heifer bull with good performance.
 365 ADG: 3.58lbs/day
 AOD: 5 years

| |
|--------------|
| BW: 81 |
| ADJ WW: 599 |
| ADJ YW: 1173 |

93E ^{Red} *BLD* Yukon 93E
 DOB: 07/03/2017 REG: 2005656 BLJ 93E

TOWAW TEMPT 15X
 RED HOWE TEMPT 87B
 RED HOWE MS CRESTON 80S

RED BRYLOR NEW TREND 22D
 RED DELAR MS DIVINEND 817U
 RED COMPASS MS DIVIDEND 815J

| BW | WW | YW | MILK | TM | CE | MARB | REA |
|------|-----|-----|------|-----|------|-------|-------|
| +1.2 | +56 | +90 | +23 | +50 | -1.6 | +0.24 | -0.06 |

Here is a stout, deep sided, wide topped cow bull on offer from Janessa. Natural muscling and great eye appeal.
 365 ADG: 3.76lbs/day
 AOD: 9 years

| |
|--------------|
| BW: 84 |
| ADJ WW: 665 |
| ADJ YW: 1237 |

78E ^{Red} *BLD* Grizz 78E
 DOB: 21/01/2017 REG: 1995967 BLJ 78E

RED BRYLOR RED KODIAK 3A
 RED ANCHOR 1 RED KODIAK 88C
 RED ROYAL FLAMETTE 3P

RED BLADES DIVIDEND 42A
 RED FINE LINE SAMMY 20C
 RED FINE LINE SAMMY 22A

| BW | WW | YW | MILK | TM | CE | MARB | REA |
|------|-----|-----|------|-----|-------|-------|-------|
| -4.3 | +46 | +68 | +18 | +39 | +11.0 | +0.21 | +0.05 |

Another good performing heifer bull with loads of style on offer by Janessa. He's dark red with good length and depth, all in all an attractive profile.
 365 ADG: 3.38lbs/day
 AOD: 2 years

| |
|--------------|
| BW: 78 |
| ADJ WW: 633 |
| ADJ YW: 1175 |

213E ^{Red} *BMB* Mack 213E
 DOB: 30/01/2017 REG: 2005073 BMB 53E

RED GEIS MISSION 221'11
 RED MAC MISSION 121C
 RED XO CROWFOOT GOLDETTE 0132X

RED BMB NEMO 485A
 RED BMB EMU MAR 841C
 RED BMB EMU MAR 517A

| BW | WW | YW | MILK | TM | CE | MARB | REA |
|------|-----|-----|------|-----|------|-------|-------|
| -3.7 | +43 | +64 | +16 | +39 | +9.8 | +0.13 | +0.18 |

Here's another calving ease bull to use on heifers with a nice moderate frame.
 365 ADG: 2.96lbs/day
 AOD: 2 Years

| |
|--------------|
| BW: 78 |
| ADJ WW: 628 |
| ADJ YW: 1102 |



BMB Brewin

ANGUS



Proud Sponsor



Colin Hollywood

Sales Consultant, AG Equipment
chollywood@rockymtn.com

Hwy 3 West & 864 Secondary
Taber, AB
T1G 2E5

rockymtn.com

Main Line 403 223 2333
Toll Free 888 665 0538
Mobile 403 308 8059
Fax 403 223 1515

214E ^{Red} *BMB* Kodiak 214E

DOB: 31/01/2017 REG: 2005080 BMB 214E

BLACK BRYLOR KODIAK 204Y
RED BRYLOR RED KODIAK 3A
RED BRYLOR FAYETTE 40Y

RED BRYLOR MUL 32T
RED BMB DELIGHT 98W
RED L4 DELIGHT 416P

| BW | WW | YW | MILK | TM | CE | MARB | REA |
|------|-----|-----|------|-----|------|-------|-------|
| -2.1 | +61 | +83 | +27 | +58 | +3.9 | +0.24 | +0.08 |

Definitely a cow bull here. Powerful deep bodied, long spined, wide topped with natural muscle shape. He is out of one of our Elite Premier Dams who always produces many great calves for us.

365 ADG: 3.22 lbs/day
AOD: 8 years

| |
|--------------|
| BW: 88 |
| ADJ WW: 682 |
| ADJ YW: 1197 |

229E ^{Red} *BMB* Stronghold 229E

DOB: 03/02/2017 REG: 2005089 BMB 229E

RED LJT CITADEL 812
RED TROTTERS STRONGHOLD 156
RED LJT PEARL 579

RED COCKBURN RIBEYE 411W
RED S- ZINNIA ROXIE 104Z
RED S- ROXIE 4P

| BW | WW | YW | MILK | TM | CE | MARB | REA |
|------|-----|------|------|-----|------|-------|-------|
| +3.5 | +67 | +100 | +16 | +48 | -1.7 | +0.45 | +0.20 |

Here is a stout, thick made, long, deep sided, wide topped cow bull on offer. Very eye appealing.

365 ADG: 3.53lbs/day
AOD: 5 years

| |
|--------------|
| BW: 100 |
| ADJ WW: 718 |
| ADJ YW: 1284 |

217E ^{Red} *BMB* Beretta 217E

DOB: 31/01/2017 REG: 2005079 BMB 217E

RED CLAY COLT 21X
RED LONE STONE REVOLVER 138Z
RED LONE STONE JENNA 95U

RED PERKS CHATEAU 309R
RED BMB SCARLETT 272Y
RED BMB SCARLETT 44T

| BW | WW | YW | MILK | TM | CE | MARB | REA |
|------|-----|------|------|-----|------|-------|-------|
| +1.6 | +72 | +124 | +9 | +43 | +1.1 | +0.18 | -0.05 |

Here again we have another great performing cow bull. Deep bodied, smooth sided with natural muscling.

365 ADG: 3.67lbs/day
AOD: 6 years

| |
|--------------|
| BW: 98 |
| ADJ WW: 714 |
| ADJ YW: 1301 |



BMB Brewin

ANGUS

231E ^{Red} *BMB* Bullseye 231E
 DOB: 03/02/2017 REG: 2005088 BMB 231E

RED SOO LINE POWER EYE 161X
 RED DOUBLE B BULLSEYE 1B
 RED BLAIRS PRICILLA 44Z

RED BRYLOR TOAST 30T
 RED BMB FANNY J 667B
 RED BMB FANNY J 119W

| BW | WW | YW | MILK | TM | CE | MARB | REA |
|------|-----|------|------|-----|------|-------|-------|
| +0.2 | +66 | +109 | +10 | +42 | +2.9 | +0.37 | -0.19 |

Here is a bull who is wide topped, long spined, deep chested and lots of natural muscling. Tons of growth and eye appeal.
 365 ADG: 3.78lbs/day
 AOD: 3 years

| |
|--------------|
| BW: 88 |
| ADJ WW: 710 |
| ADJ YW: 1314 |



246E ^{Red} *BMB* Apache 246E
 DOB: 06/02/2017 REG: 2005098 BMB 246E

RED BHC SANDSTONE
 RED BRYLOR STALLION 19J
 RED PTTV COUNTESS 13'97

RED LJC MISSION STATEMENT P27
 RED BMB SHAWNA 177X
 RED SK SHAUNA SAND 126R

| BW | WW | YW | MILK | TM | CE | MARB | REA |
|------|-----|-----|------|-----|------|-------|-------|
| -0.4 | +55 | +90 | +4 | +33 | +2.6 | +0.31 | -0.10 |

Another good bull on offer here.
 365 ADG: 3.37lbs/day
 AOD: 7 years

| |
|--------------|
| BW: 84 |
| ADJ WW: 653 |
| ADJ YW: 1192 |

270E ^{Red} *BMB* Boss 270E
 DOB: 10/02/2017 REG: 2005110 BMB 270E

RED BRYLOR TOAST 30T
 RED BMB NEMO 485A
 RED BMB SCARLET FIREFLY 69U

RED SIX MILE SAKIC 832S
 RED S- BLONDE GOLDIE 32B
 RED S- GOLDIE 32T

| BW | WW | YW | MILK | TM | CE | MARB | REA |
|------|-----|-----|------|-----|-------|-------|-------|
| -6.4 | +42 | +67 | +16 | +39 | +11.4 | +0.15 | -0.21 |

If you are looking to grab some sleep at night, here is a heifer bull with a lighter birthweight and pretty good rate of gain. He is deep bodied, smooth sided, natural muscle shape all packed up in one attractive package.
 365 ADG: 3.35lbs/day
 AOD: 3 years

| |
|--------------|
| BW: 68 |
| ADJ WW: 650 |
| ADJ YW: 1186 |



BMB Brewin

ANGUS

291E ^{Red} *BMB* Benington 291E
 DOB: 15/02/2017 REG: 2010510 BMB 291E

RED BRYLOR TOAST 30T
 RED BMB NEMO 485A
 RED BMB SCARLET FIREFLY 69U

RED SSS STORM 87M
 RED BMB SERENA 381Z
 RED BMB SERENA 61U

| BW | WW | YW | MILK | TM | CE | MARB | REA |
|------|-----|-----|------|-----|-------|-------|-------|
| -3.7 | +51 | +79 | +15 | +38 | +11.0 | +0.15 | +0.03 |

Here is a good tempered , easy going bull with depth and lots of natural muscling.
 365 ADG: 3.27lbs/day
 AOD: 5 years

| |
|--------------|
| BW: 86 |
| ADJ WW: 688 |
| ADJ YW: 1211 |

316E ^{Red} *BMB* Mac Mission 316E
 DOB: 21/02/2017 REG: 2005134 BMB 316E

RED GEIS MISSION 221'11
 RED MAC MISSION 121C
 RED XO CROWFOOT GOLDETTE 0132X

RED GEIS PRIME RIB 411
 RED BMB CATERINA 769C
 RED BRYLOR CATERINA 181S

| BW | WW | YW | MILK | TM | CE | MARB | REA |
|------|-----|-----|------|-----|------|-------|-------|
| +0.4 | +48 | +75 | +14 | +36 | +1.7 | +0.32 | +0.09 |

Another good cow bull on offer here with a good weaning rate ratio of 106. Lots of muscle shape. Tons of growth and eye appeal.
 365 ADG: 3.20lbs/day
 AOD: 2 years

| |
|--------------|
| BW: 90 |
| ADJ WW: 679 |
| ADJ YW: 1191 |

Proud Sponsor

OLS Mineral - "Simply the Best"

Dealer: **Fleming Stock Farms**

Duncan Fleming
 Granum, AB
 Cell: 403-625-0427
 Phone: 403-687-2288
 Toll Free: 1-800-565-5288
 flemingangus@xplornet.com



RETURN ADDRESS:

EASY RAY ANGUS
BOX 1279
RAYMOND ALBERTA
T0K 2S0